



Catalog: OM105120

Scan to get more validated information



# Rabbit anti-EEA1 polyclonal antibody - N-terminal region

Catalog: OM105120

☐ 100ug

## Product profile

Product name	Rabbit anti-EEA1 polyclonal antibody - N-terminal region
Antibody Type	Primary Antibodies
Immunogen	The immunogen for anti-EEA1 antibody: synthetic peptide directed towards the N terminal of human EEA1

## Key Feature

Clonality	Polyclonal
Isotype	IgG
Host Species	Rabbit
Tested Applications	WB ,IP
Species Reactivity	Bovine Dog Guinea Pig Horse Human Mouse Pig Rabbit Rat
Concentration	1 mg/ml
Purification	Affinity purified

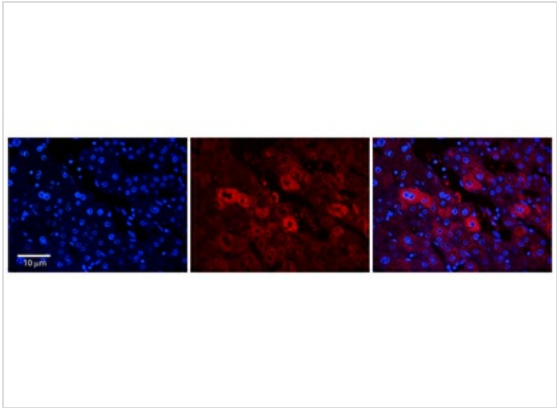
## Target Information

Gene Symbol	EEA1
Gene Synonyms	EEA1
Gene Full Name	Early endosome antigen 1
Gene Summary	EEA1 is involved in neuronal synaptic vesicle function and axonal transport and growth. EEA1 may undergo calcium-dependent conformational changes that are required for binding to SNAP-25.
Alternative Names	MST105, ZFYVE2, MSTP105
Molecular Weight(MW)	162kDa
Sequence	1411 amino acids

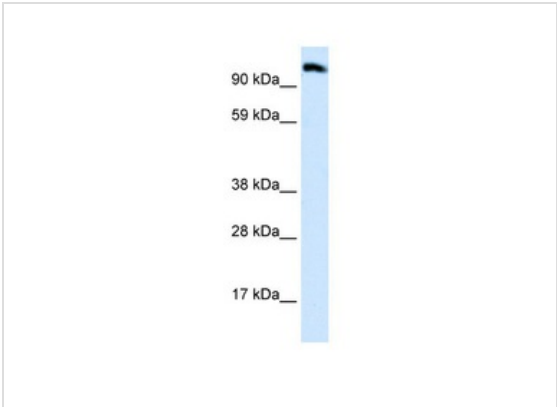
Database Links

Entrez Gene	8411
SwissProt ID	Q15075
Protein Accession	NP_003557

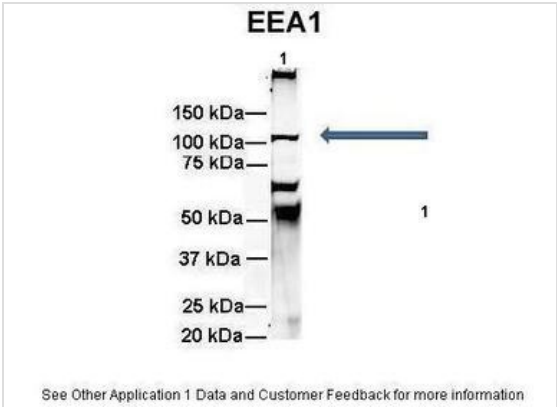
Application



**Application**  
Rabbit Anti-EEA1 Antibody  
Catalog Number:  
Formalin Fixed Paraffin Embedded Tissue: Human Adult Liver  
Observed Staining: Cytoplasm in hepatocytes, moderate signal, moderate tissue distribution  
Primary Antibody Concentration: 1:100  
Secondary Antibody: Donkey anti-Rabbit-Cy3  
Secondary Antibody Concentration: 1:200  
Magnification: 20X  
Exposure Time: 0.5 – 2.0 sec  
Protocol located in Reviews and Data.



**Application**  
**WB Suggested Anti-EEA1 Antibody Titration:** 0.06ug/ml  
**ELISA Titer:** 1:312500  
**Positive Control:** Human Placenta



**Application**  
**Amount and Sample Type :**  
500 ug rat brain homogenate  
**Amount of IP Antibody :**  
6 ug  
**Primary Antibody :**  
EEA1  
**Primary Antibody Dilution :**  
1:500  
**Secondary Antibody :**  
Goat anti-rabbit Alexa-Fluor 594  
**Secondary Antibody Dilution :**  
1:5000  
**Gene Name :**  
EEA1  
**Submitted by :**  
Dr. Yuzhi Chen, University of Arkansas for Medical Science

Application Notes	WB:1:500~1:2000 IP:1:100~1:500
-------------------	-----------------------------------

**Notes:**Optimal dilutions/concentrations should be determined by the researcher.

## Additional Information

---

<b>Form</b>	Liquid
<b>Storage Instructions</b>	Aliquot and store at -20°C. Avoid repeated freeze / thaw cycles
<b>Storage Buffer</b>	phosphate buffered saline , pH 7.4, 150mM NaCl, 0.02% sodium azide and 50% glycerol.
<b>Note</b>	The product is for research use only,not for use in diagnostic or therapeutic procedures.

# OmnimAbs.com

---

order@Omnimabs.com

506 N. GARFIELD AVE #210 ALHAMBRA, CA 91801

This product is for research use only and is not approved for use in humans or in clinical diagnosis. Primary Antibodies are guaranteed for 1 year from date of receipt

---