



Catalog: OM117511

Scan to get more validated information



# Rabbit anti-EEA1 polyclonal antibody - N-terminal region

Catalog: OM117511

☐ 100ug

## Product profile

Product name	Rabbit anti-EEA1 polyclonal antibody - N-terminal region
Antibody Type	Primary Antibodies
Immunogen	The immunogen for anti-EEA1 antibody: synthetic peptide directed towards the N terminal of human EEA1

## Key Feature

Clonality	Polyclonal
Isotype	IgG
Host Species	Rabbit
Tested Applications	WB
Species Reactivity	Bovine Dog Horse Human Mouse Pig Rabbit Rat
Concentration	1 mg/ml
Purification	Affinity purified

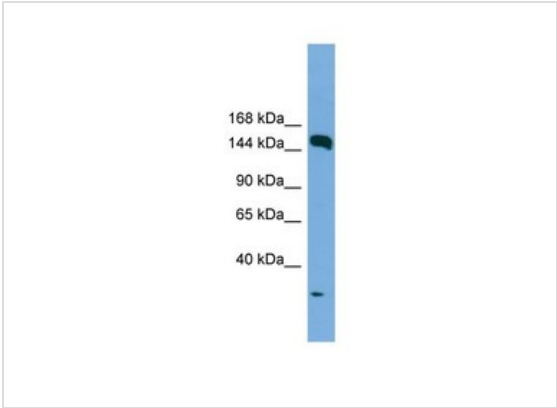
## Target Information

Gene Symbol	EEA1
Gene Synonyms	ZFYVE2; MST105; MSTP105
Gene Full Name	Early endosome antigen 1
Gene Summary	EEA1 is involved in neuronal synaptic vesicle function and axonal transport and growth. EEA1 may undergo calcium-dependent conformational changes that are required for binding to SNAP-25.
Alternative Names	ZFYVE2, MST105, MSTP105
Molecular Weight(MW)	162kDa
Sequence	1411 amino acids

## Database Links

Entrez Gene	8411
SwissProt ID	Q15075
Protein Accession	NP_003557

## Application



**Western blot**  
0.2-1 ug/ml  
ELISA Titer: 1:62500  
Positive Control: HepG2 cell lysate

Application Notes	WB:1:500~1:2000 <b>Notes:</b> Optimal dilutions/concentrations should be determined by the researcher.
-------------------	---

## Additional Information

Form	Liquid
Storage Instructions	Aliquot and store at -20°C. Avoid repeated freeze / thaw cycles
Storage Buffer	phosphate buffered saline , pH 7.4, 150mM NaCl, 0.02% sodium azide and 50% glycerol.
Note	The product is for research use only,not for use in diagnostic or therapeutic procedures.

# OmnimAbs.com

order@Omnimabs.com  
506 N. GARFIELD AVE #210 ALHAMBRA, CA 91801  
This product is for research use only and is not approved for use in humans or in clinical diagnosis. Primary Antibodies are guaranteed for 1 year from date of receipt

