



Catalog: OM105133

Scan to get more validated information



# Rabbit anti-ELL polyclonal antibody - middle region

Catalog: OM105133

☐ 100ug

## Product profile

Product name	Rabbit anti-ELL polyclonal antibody - middle region
Antibody Type	Primary Antibodies
Immunogen	The immunogen for anti-ELL antibody: synthetic peptide directed towards the middle region of human ELL

## Key Feature

Clonality	Polyclonal
Isotype	IgG
Host Species	Rabbit
Tested Applications	WB
Species Reactivity	Dog Human
Concentration	1 mg/ml
Purification	Affinity purified

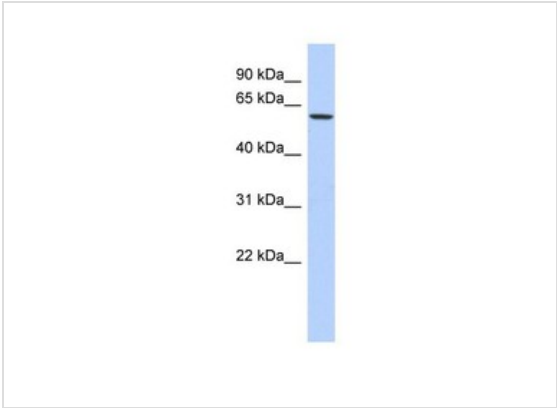
## Target Information

Gene Symbol	ELL
Gene Synonyms	C19orf17; DKFZp434I1916; ELL1; Men; MEN; PPP1R68
Gene Full Name	Elongation factor RNA polymerase II
Gene Summary	ELL is an elongation factor that can increase the catalytic rate of RNA polymerase II transcription by suppressing transient pausing by the polymerase at multiple sites along the DNA.
Alternative Names	C19orf17, DKFZp434I1916, ELL1, Men, MEN, PPP1R68
Molecular Weight(MW)	68kDa
Sequence	621 amino acids

## Database Links

Entrez Gene	8178
SwissProt ID	P55199
Protein Accession	NP_006523

## Application



**Western blot**  
0.2-1 ug/ml  
ELISA Titer: 1:312500  
Positive Control: PANC1 cell lysate

Application Notes	WB:1:500~1:2000 <b>Notes:</b> Optimal dilutions/concentrations should be determined by the researcher.
-------------------	-----------------------------------------------------------------------------------------------------------

## Additional Information

Form	Liquid
Storage Instructions	Aliquot and store at -20°C. Avoid repeated freeze / thaw cycles
Storage Buffer	phosphate buffered saline , pH 7.4, 150mM NaCl, 0.02% sodium azide and 50% glycerol.
Note	The product is for research use only,not for use in diagnostic or therapeutic procedures.

# OmnimAbs.com

order@Omnimabs.com  
506 N. GARFIELD AVE #210 ALHAMBRA, CA 91801  
This product is for research use only and is not approved for use in humans or in clinical diagnosis. Primary Antibodies are guaranteed for 1 year from date of receipt