



Catalog: OM105125

Scan to get more validated information



# Rabbit anti-EOMES polyclonal antibody - N-terminal region

Catalog: OM105125

☐ 100ug

## Product profile

|               |   |
|---------------|---|
| Product name  | Rabbit anti-EOMES polyclonal antibody - N-terminal region   |
| Antibody Type | Primary Antibodies  |
| Immunogen     | The immunogen for anti-EOMES antibody: synthetic peptide directed towards the N terminal of human EOMES |

## Key Feature

|                     |   |
|---------------------|---|
| Clonality           | Polyclonal                                  |
| Isotype             | IgG   |
| Host Species        | Rabbit                                      |
| Tested Applications | WB  |
| Species Reactivity  | Bovine Dog Guinea Pig Horse Human Mouse Pig |
| Concentration       | 1 mg/ml                                     |
| Purification        | Affinity purified                           |

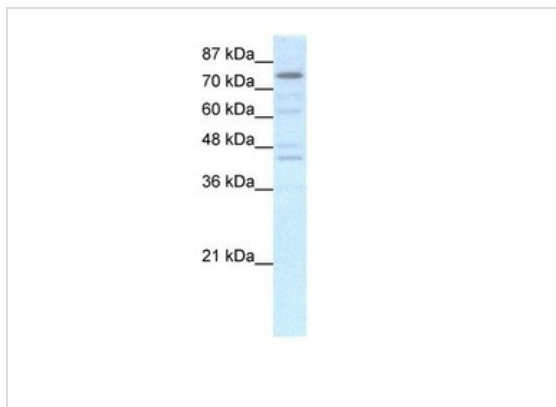
## Target Information

|                      |  |
|----------------------|--|
| Gene Symbol          | EOMES  |
| Gene Synonyms        | TBR2   |
| Gene Full Name       | Eomesodermin   |
| Gene Summary         | EOMES is a member of a conserved protein family that shares a common DNA-binding domain, the T-box. T-box genes encode transcription factors involved in the regulation of developmental processes. A similar gene disrupted in mice is shown to be essential during trophoblast development and gastrulation. |
| Alternative Names    | TBR2   |
| Molecular Weight(MW) | 73kDa  |
| Sequence             | 686 amino acids  |

## Database Links

|                   |           |
|-------------------|-----------|
| Entrez Gene       | 8320      |
| SwissProt ID      | O95936    |
| Protein Accession | NP_005433 |

## Application



**Western blot**  
Human HepG2

**Application Notes**

**WB:**1:500~1:2000

**Notes:**Optimal dilutions/concentrations should be determined by the researcher.

## Additional Information

|                             |   |
|-----------------------------|---|
| <b>Form</b>                 | Liquid  |
| <b>Storage Instructions</b> | Aliquot and store at -20°C. Avoid repeated freeze / thaw cycles                           |
| <b>Storage Buffer</b>       | phosphate buffered saline , pH 7.4, 150mM NaCl, 0.02% sodium azide and 50% glycerol.      |
| <b>Note</b>                 | The product is for research use only,not for use in diagnostic or therapeutic procedures. |

# OmnimAbs.com

order@Omnimabs.com

506 N. GARFIELD AVE #210 ALHAMBRA, CA 91801

This product is for research use only and is not approved for use in humans or in clinical diagnosis. Primary Antibodies are guaranteed for 1 year from date of receipt