



Catalog: OM105572

Scan to get more validated information



Rabbit anti-EVX2 polyclonal antibody - N-terminal region

Catalog: OM105572

☐ 100ug

Product profile

Product name	Rabbit anti-EVX2 polyclonal antibody - N-terminal region
Antibody Type	Primary Antibodies
Immunogen	The immunogen for anti-EVX2 antibody: synthetic peptide directed towards the N terminal of human LOC344191

Key Feature

Clonality	Polyclonal
Isotype	IgG
Host Species	Rabbit
Tested Applications	WB
Species Reactivity	Dog Guinea Pig Human Mouse
Concentration	1 mg/ml
Purification	Protein A

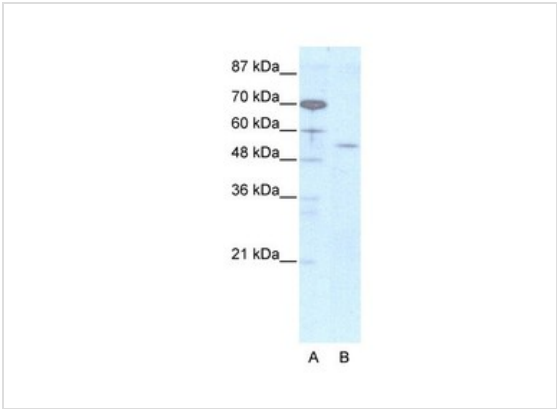
Target Information

Gene Symbol	EVX2
Gene Synonyms	EVX-2
Gene Full Name	Even-skipped homeobox 2
Gene Summary	LOC344191 is a new candidate transcription factor.
Alternative Names	EVX-2
Molecular Weight(MW)	74kDa
Sequence	727 amino acids

Database Links

Entrez Gene	344191
SwissProt ID	Q03828
Protein Accession	XP_292968

Application



Western blot
2.5ug/ml
ELISA Titer: 1:2500
Positive Control: HepG2 cell lysate

Application Notes	WB: 1:500~1:2000 Notes: Optimal dilutions/concentrations should be determined by the researcher.
-------------------	---

Additional Information

Form	Liquid
Storage Instructions	Aliquot and store at -20°C. Avoid repeated freeze / thaw cycles
Storage Buffer	phosphate buffered saline , pH 7.4, 150mM NaCl, 0.02% sodium azide and 50% glycerol.
Note	The product is for research use only,not for use in diagnostic or therapeutic procedures.

OmnimAbs.com

order@Omnimabs.com
506 N. GARFIELD AVE #210 ALHAMBRA, CA 91801
This product is for research use only and is not approved for use in humans or in clinical diagnosis. Primary Antibodies are guaranteed for 1 year from date of receipt