



Catalog: OM105108

Scan to get more validated information



Rabbit anti-FIZ1 polyclonal antibody - middle region

Catalog: OM105108

☐ 100ug

Product profile

Product name	Rabbit anti-FIZ1 polyclonal antibody - middle region
Antibody Type	Primary Antibodies
Immunogen	The immunogen for anti-FIZ1 antibody: synthetic peptide directed towards the middle region of human FIZ1

Key Feature

Clonality	Polyclonal
Isotype	IgG
Host Species	Rabbit
Tested Applications	WB
Species Reactivity	Bovine Dog Human Mouse Rat
Concentration	1 mg/ml
Purification	Affinity purified

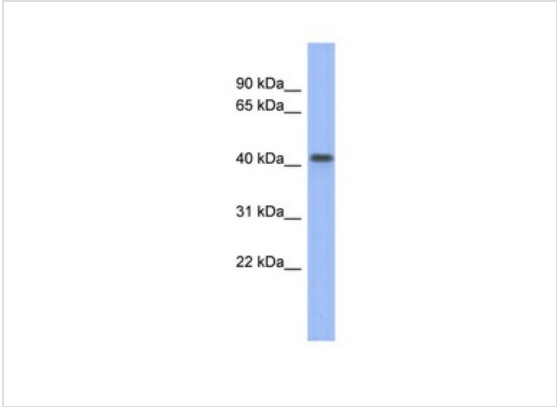
Target Information

Gene Symbol	FIZ1
Gene Synonyms	FIZ1
Gene Full Name	FLT3-interacting zinc finger 1
Gene Summary	FIZ1 is zinc finger protein, which interacts with a receptor tyrosine kinase involved in the regulation of hematopoietic and lymphoid cells. FIZ1 also interacts with a transcription factor that regulates the expression of rod-specific genes in retina.
Alternative Names	FLJ14768, ZNF798
Molecular Weight(MW)	52kDa
Sequence	496 amino acids

Database Links

Entrez Gene	84922
SwissProt ID	Q96SL8
Protein Accession	NP_116225

Application



Application
WB Suggested Anti-FIZ1 Antibody Titration: 0.2-1 ug/ml
ELISA Titer: 1:312500
Positive Control: Human Small Intestine

Application Notes	WB: 1:500~1:2000 Notes: Optimal dilutions/concentrations should be determined by the researcher.
-------------------	---

Additional Information

Form	Liquid
Storage Instructions	Aliquot and store at -20°C. Avoid repeated freeze / thaw cycles
Storage Buffer	phosphate buffered saline , pH 7.4, 150mM NaCl, 0.02% sodium azide and 50% glycerol.
Note	The product is for research use only,not for use in diagnostic or therapeutic procedures.

OmnimAbs.com

order@Omnimabs.com
506 N. GARFIELD AVE #210 ALHAMBRA, CA 91801
This product is for research use only and is not approved for use in humans or in clinical diagnosis. Primary Antibodies are guaranteed for 1 year from date of receipt

