



Catalog: OM105123

Scan to get more validated information



# Rabbit anti-GFI1B polyclonal antibody - N-terminal region

Catalog: OM105123

☐ 100ug

## Product profile

Product name	Rabbit anti-GFI1B polyclonal antibody - N-terminal region
Antibody Type	Primary Antibodies
Immunogen	The immunogen for anti-GFI1B antibody: synthetic peptide directed towards the N terminal of human GFI1B

## Key Feature

Clonality	Polyclonal
Isotype	IgG
Host Species	Rabbit
Tested Applications	WB ,IHC
Species Reactivity	Bovine Dog Horse Human Mouse Pig Rat
Concentration	1 mg/ml
Purification	Affinity purified

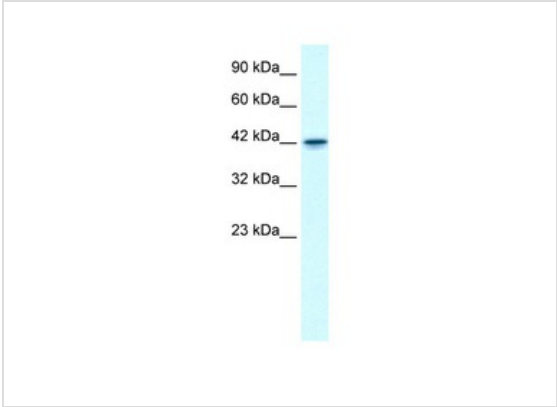
## Target Information

Gene Symbol	GFI1B
Gene Synonyms	GFI1B
Gene Full Name	Growth factor independent 1B transcription repressor
Gene Summary	GFI1B acts in the late stage of erythroid differentiation as a transcriptional repressor. GATA-1 and NF-Y both contribute to erythroid-specific transcriptional activation of the Gfi-1B promoter. This zinc finger protein mediates erythroid expansion and has a role in normal erythropoiesis.
Molecular Weight(MW)	38kDa
Sequence	330 amino acids

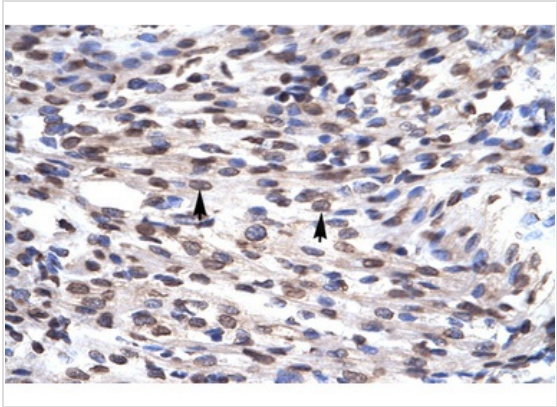
Database Links

Entrez Gene	8328
SwissProt ID	Q6T888
Protein Accession	NP_004179

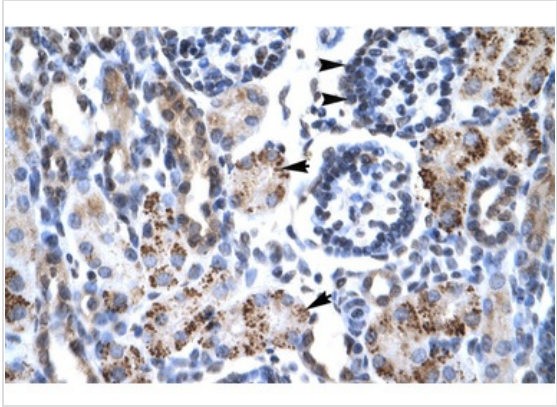
Application



**Application**  
**WB Suggested Anti-GFI1B Antibody Titration:** 0.2-1 ug/ml  
**ELISA Titer:** 1:312500  
**Positive Control:** Jurkat cell lysate



**Application**  
Rabbit Anti-GFI1B Antibody  
Catalog Number: ARP30093  
Paraffin Embedded Tissue: Human Heart  
Cellular Data: Myocardial cells  
Antibody Concentration: 4.0-8.0 ug/ml  
Magnification: 400X



**Application**  
Rabbit Anti-GFI1B Antibody  
Catalog Number: ARP30093  
Paraffin Embedded Tissue: Human Kidney  
Cellular Data: Epithelial cells of renal tubule and renal corpuscle  
Antibody Concentration: 4.0-8.0 ug/ml  
Magnification: 400X

Application Notes	WB:1:500~1:2000
	IHC:1:50~1:200
	Notes:Optimal dilutions/concentrations should be determined by the researcher.

Additional Information

Form	Liquid
------	--------

<b>Storage Instructions</b>	Aliquot and store at -20°C. Avoid repeated freeze / thaw cycles
<b>Storage Buffer</b>	phosphate buffered saline , pH 7.4, 150mM NaCl, 0.02% sodium azide and 50% glycerol.
<b>Note</b>	The product is for research use only,not for use in diagnostic or therapeutic procedures.

# OmnimAbs.com

order@Omnimabs.com  
506 N. GARFIELD AVE #210 ALHAMBRA, CA 91801  
This product is for research use only and is not approved for use in humans or in clinical diagnosis. Primary Antibodies are guaranteed for 1 year from date of receipt

