



Catalog: OM105110

Scan to get more validated information



# Rabbit anti-GLIS2 polyclonal antibody - N-terminal region

Catalog: OM105110

☐ 100ug

## Product profile

Product name	Rabbit anti-GLIS2 polyclonal antibody - N-terminal region
Antibody Type	Primary Antibodies
Immunogen	The immunogen for anti-GLIS2 antibody: synthetic peptide directed towards the N terminal of human GLIS2

## Key Feature

Clonality	Polyclonal
Isotype	IgG
Host Species	Rabbit
Tested Applications	WB
Species Reactivity	Dog Guinea Pig Horse Human Mouse Rat
Concentration	1 mg/ml
Purification	Protein A

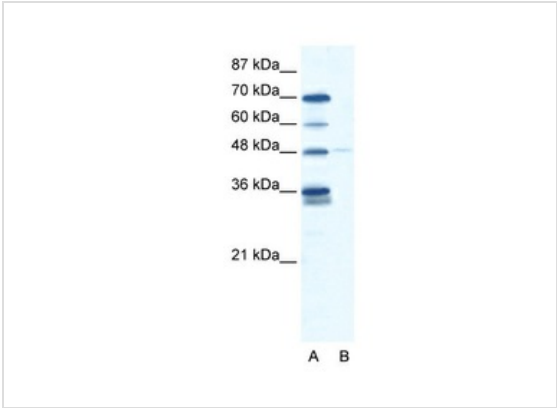
## Target Information

Gene Symbol	GLIS2
Gene Synonyms	GLIS2
Gene Full Name	GLIS family zinc finger 2
Gene Summary	Members of the Kruppel-like zinc finger protein family, such as GLIS2, function as activators and/or repressors of gene transcription.[supplied by OMIM].
Alternative Names	NKL, NPHP7
Molecular Weight(MW)	56kDa
Sequence	524 amino acids

## Database Links

Entrez Gene	84662
SwissProt ID	Q9BZE0
Protein Accession	NP_115964

## Application



**Application**  
**WB Suggested Anti-GLIS2 Antibody Titration:** 2.5ug/ml  
**ELISA Titer:** 1:12500  
**Positive Control:** HepG2 cell lysate

Application Notes	<b>WB:</b> 1:500~1:2000 <b>Notes:</b> Optimal dilutions/concentrations should be determined by the researcher.
-------------------	---

## Additional Information

Form	Liquid
Storage Instructions	Aliquot and store at -20°C. Avoid repeated freeze / thaw cycles
Storage Buffer	phosphate buffered saline , pH 7.4, 150mM NaCl, 0.02% sodium azide and 50% glycerol.
Note	The product is for research use only,not for use in diagnostic or therapeutic procedures.

# OmnimAbs.com

order@Omnimabs.com  
506 N. GARFIELD AVE #210 ALHAMBRA, CA 91801  
This product is for research use only and is not approved for use in humans or in clinical diagnosis. Primary Antibodies are guaranteed for 1 year from date of receipt