



Catalog: OM124273

Scan to get more validated information



Rabbit anti-GRP75 polyclonal antibody

Catalog: OM124273

☐ 100ug

Product profile

Product name	Rabbit anti-GRP75 polyclonal antibody
Antibody Type	Primary Antibodies
Immunogen	The antiserum was produced against synthesized peptide derived from human GRP75.

Key Feature

Clonality	Polyclonal
Host Species	Rabbit
Tested Applications	WB ,IHC ,IF ,ELISA
Species Reactivity	Human Mouse Rat
Concentration	1 mg/ml
Purification	Affinity purified

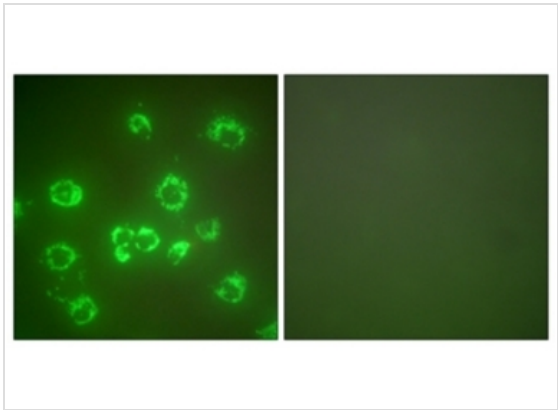
Target Information

Gene Symbol	HSPA9
Gene Synonyms	HSPA9B; MOT2; HEAT-SHOCK 70-KD PROTEIN 9B; MORTALIN 2; MORTALIN; PERINUCLEAR; heat shock 70kDa protein 9B (mortalin-2)

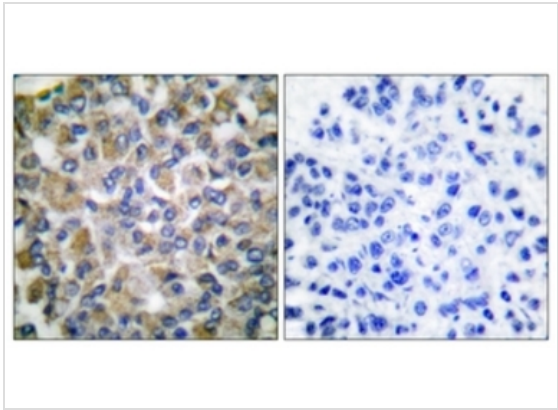
Database Links

Entrez Gene	3313
Unigene	184233 184233
OMIM	600548
SwissProt ID	P38646 Q8N1C8

Application



Immunofluorescence
Immunofluorescence analysis of COS7 cells, using GRP75 Antibody. The picture on the right is treated with the synthesized peptide.



Western blot
Immunohistochemistry analysis of paraffin-embedded human breast carcinoma tissue, using GRP75 Antibody. The picture on the right is treated with the synthesized peptide. Western blot analysis of extracts from COS7 cells, using GRP75 Antibody. The lane on the right is treated with the synthesized peptide.

Application Notes	WB:1:500~1:1000
	IHC:1:50~1:100
	IF:1:100~1:500
	ELISA:1:5000

Additional Information

Form	Liquid
Storage Instructions	store at -20°C. Avoid repeated freeze / thaw cycles
Storage Buffer	Rabbit IgG in phosphate buffered saline (without Mg ²⁺ and Ca ²⁺), pH 7.4, 150mM NaCl, 0.02% sodium azide and 50% glycerol.
Note	The product is for research use only, not for use in diagnostic or therapeutic procedures.

OmnimAbs.com

order@Omnimabs.com
506 N. GARFIELD AVE #210 ALHAMBRA, CA 91801
This product is for research use only and is not approved for use in humans or in clinical diagnosis. Primary Antibodies are guaranteed for 1 year from date of receipt