



Catalog: OM105107

Scan to get more validated information



Rabbit anti-HES7 polyclonal antibody - middle region

Catalog: OM105107

☐ 100ug

Product profile

Product name	Rabbit anti-HES7 polyclonal antibody - middle region
Antibody Type	Primary Antibodies
Immunogen	The immunogen for anti-HES7 antibody: synthetic peptide directed towards the middle region of human HES7

Key Feature

Clonality	Polyclonal
Isotype	IgG
Host Species	Rabbit
Tested Applications	WB ,IHC
Species Reactivity	Bovine Dog Human Mouse Pig Rabbit Rat
Concentration	1 mg/ml
Purification	Affinity purified

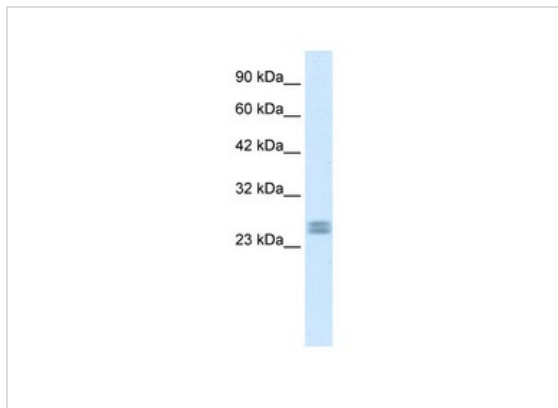
Target Information

Gene Symbol	HES7
Gene Synonyms	HES7
Gene Full Name	Hairy and enhancer of split 7 (Drosophila)
Gene Summary	In mouse, Hes7 expression is associated with somitogenesis and is controlled by Notch signaling.
Alternative Names	SCDO4, bHLHb37
Molecular Weight(MW)	25kDa
Sequence	225 amino acids

Database Links

Entrez Gene	84667
SwissProt ID	Q9BYE0
Protein Accession	NP_115969

Application

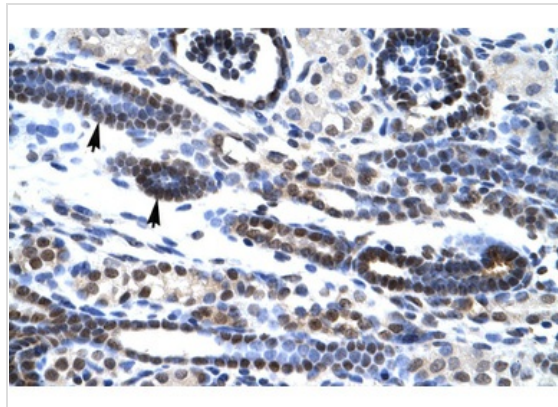


Application

WB Suggested Anti-HES7 Antibody Titration: 0.2-1 ug/ml

ELISA Titer: 1:312500

Positive Control: Human heart



Application

Rabbit Anti-HES7 Antibody

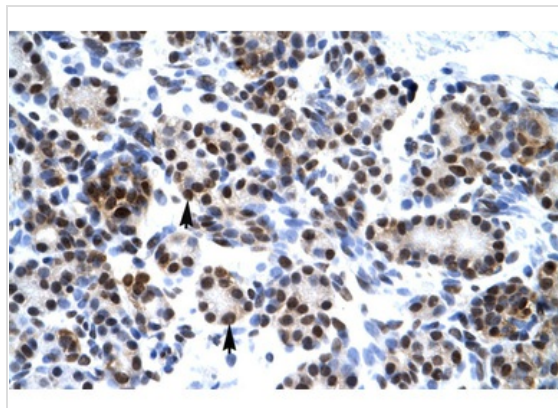
Catalog Number: ARP30035

Paraffin Embedded Tissue: Human Kidney

Cellular Data: Epithelial cells of renal tubule

Antibody Concentration: 4.0-8.0 ug/ml

Magnification: 400X



Application

Rabbit Anti-HES7 Antibody

Catalog Number: ARP30035

Paraffin Embedded Tissue: Human Pancreas

Cellular Data: Epithelial cells of pancreatic acinus

Antibody Concentration: 4.0-8.0 ug/ml

Magnification: 400X

Application Notes

WB:1:500~1:2000

IHC:1:50~1:200

Notes:Optimal dilutions/concentrations should be determined by the researcher.

Additional Information

Form	Liquid
Storage Instructions	Aliquot and store at -20°C. Avoid repeated freeze / thaw cycles
Storage Buffer	phosphate buffered saline , pH 7.4, 150mM NaCl, 0.02% sodium azide and 50% glycerol.

Note

The product is for research use only, not for use in diagnostic or therapeutic procedures.

OmnimAbs.com

order@Omnimabs.com

506 N. GARFIELD AVE #210 ALHAMBRA, CA 91801

This product is for research use only and is not approved for use in humans or in clinical diagnosis. Primary Antibodies are guaranteed for 1 year from date of receipt
