



Catalog: OM105144

Scan to get more validated information



Rabbit anti-HSPB1 polyclonal antibody - C-terminal region

Catalog: OM105144

☐ 100ug

Product profile

Product name	Rabbit anti-HSPB1 polyclonal antibody - C-terminal region
Antibody Type	Primary Antibodies
Immunogen	The immunogen for anti-HSPB1 antibody: synthetic peptide directed towards the C terminal of human HSPB1

Key Feature

Clonality	Polyclonal
Isotype	IgG
Host Species	Rabbit
Tested Applications	WB ,IHC
Species Reactivity	Human
Concentration	1 mg/ml
Purification	Protein A

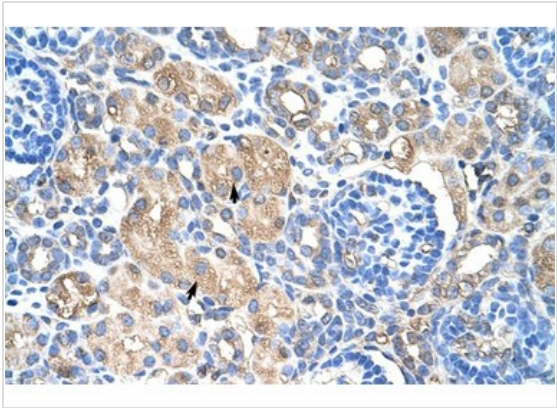
Target Information

Gene Symbol	HSPB1
Gene Synonyms	CMT2F; DKFZp586P1322; HS.76067; HSP27; HSP28; Hsp25; HMN2B; SRP27
Gene Full Name	Heat shock 27kDa protein 1
Gene Summary	HSPB1, like the other heat shock proteins, is part of a complex system of molecular chaperones in epidermal keratinocytes.
Alternative Names	CMT2F, DKFZp586P1322, HS.76067, HSP27, HSP28, Hsp25, HMN2B, SRP27
Molecular Weight(MW)	23kDa
Sequence	205 amino acids

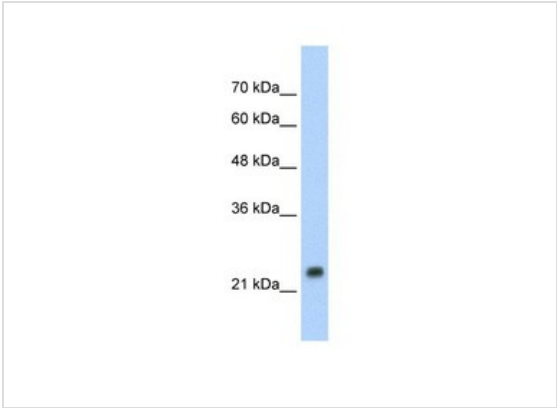
Database Links

Entrez Gene	3315
SwissProt ID	P04792
Protein Accession	NP_001531

Application



Immunohistochemical



Western blot
1.25ug/ml
ELISA Titer: 1:62500
Positive Control: HepG2 cell lysate

Application Notes	WB:1:500~1:2000 IHC:1:50~1:200 Notes:Optimal dilutions/concentrations should be determined by the researcher.
-------------------	---

Additional Information

Form	Liquid
Storage Instructions	Aliquot and store at -20°C. Avoid repeated freeze / thaw cycles
Storage Buffer	phosphate buffered saline , pH 7.4, 150mM NaCl, 0.02% sodium azide and 50% glycerol.
Note	The product is for research use only,not for use in diagnostic or therapeutic procedures.

OmnimAbs.com

This product is for research use only and is not approved for use in humans or in clinical diagnosis. Primary Antibodies are guaranteed for 1 year from date of receipt

