



Catalog: OM108246

Scan to get more validated information



Rabbit anti-Hes7 Antibody - N-terminal region

Catalog: OM108246

☐ 100ug

Product profile

Product name	Rabbit anti-Hes7 Antibody - N-terminal region
Antibody Type	Primary Antibodies
Immunogen	The immunogen for Anti-Hes7 antibody is: synthetic peptide directed towards the N-terminal region of Mouse Hes7

Key Feature

Clonality	Polyclonal
Isotype	IgG
Host Species	Rabbit
Tested Applications	WB
Species Reactivity	Mouse Human
Concentration	1 mg/ml
Purification	Affinity purified

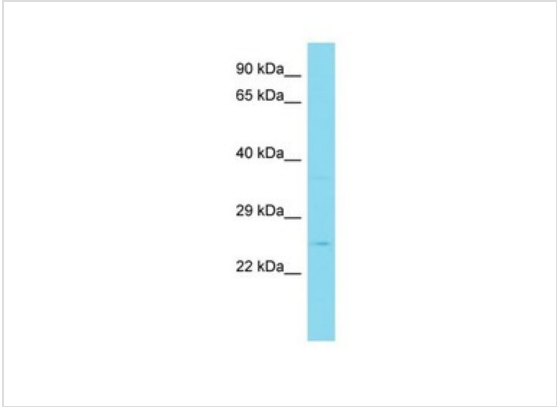
Target Information

Gene Symbol	Hes7
Gene Synonyms	bHLHb37
Gene Full Name	hairy and enhancer of split 7 (Drosophila)
Gene Summary	Hes7 is a transcriptional repressor. Hes7 represses transcription from both N box- and E box-containing promoters. Hes7 may with HES1, cooperatively regulate somite formation in the presomitic mesoderm (PSM). Hes7 may function as a segmentation clock, which is essential for coordinated somite segmentation.
Alternative Names	bHLHb37
Molecular Weight(MW)	25kDa
Sequence	225 amino acids

Database Links

Entrez Gene	84653
SwissProt ID	Q8BKT2
Protein Accession	NP_149030

Application



Western blot
Host: Rabbit
Target Name: Hes7
Sample Tissue: Mouse Stomach lysates
Antibody Dilution: 1.0ug/ml

Application Notes	WB: 1:500~1:2000 Notes: Optimal dilutions/concentrations should be determined by the researcher.
-------------------	---

Additional Information

Form	Liquid
Storage Instructions	Aliquot and store at -20°C. Avoid repeated freeze / thaw cycles
Storage Buffer	phosphate buffered saline , pH 7.4, 150mM NaCl, 0.02% sodium azide and 50% glycerol.
Note	The product is for research use only,not for use in diagnostic or therapeutic procedures.

OmnimAbs.com

order@Omnimabs.com
506 N. GARFIELD AVE #210 ALHAMBRA, CA 91801
This product is for research use only and is not approved for use in humans or in clinical diagnosis. Primary Antibodies are guaranteed for 1 year from date of receipt