



Catalog: OM105096

Scan to get more validated information



Rabbit anti-IKBKG polyclonal antibody - middle region

Catalog: OM105096

☐ 100ug

Product profile

Product name	Rabbit anti-IKBKG polyclonal antibody - middle region
Antibody Type	Primary Antibodies
Immunogen	The immunogen for anti-IKBKG antibody: synthetic peptide directed towards the middle region of human I KBKG

Key Feature

Clonality	Polyclonal
Isotype	IgG
Host Species	Rabbit
Tested Applications	WB
Species Reactivity	Dog Guinea Pig Horse Human Mouse Pig Rabbit Rat
Concentration	1 mg/ml
Purification	Protein A

Target Information

Gene Symbol	IKBKG
Gene Synonyms	IKBKG
Gene Full Name	Inhibitor of kappa light polypeptide gene enhancer in B-cells, kinase gamma
Gene Summary	Familial incontinentia pigmenti (IP) is a genodermatosis that segregates as an X-linked dominant disorder and is usually lethal prenatally in males . In affected females it causes highly variable abnormalities of the skin, hair, nails, teeth, eyes, and central nervous system. The prominent skin signs occur in 4 classic cutaneous stages: perinatal inflammatory vesicles, verrucous patches, a distinctive pattern of hyperpigmentation, and dermal scarring. Cells expressing the mutated X chromosome are eliminated selectively around the time of birth, so females with IP exhibit extremely skewed X-inactivation. Familial incontinentia pigmenti is caused by mutations in the NEMO gene and is here referred to as IP2, or 'classical' incontinentia pigmenti. Sporadic incontinentia pigmenti, the so-called IP1, which maps to Xp11, is categorized as hypomelanosis.

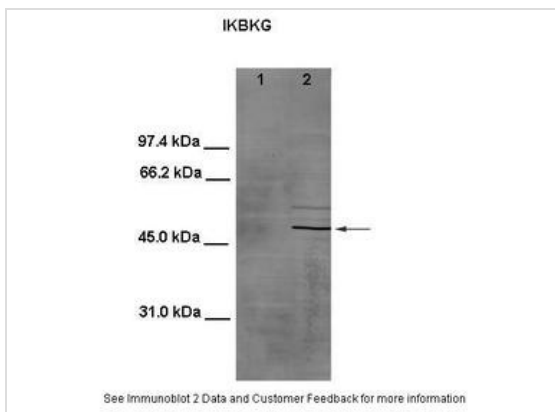
is of Ito

Alternative Names	IP, IP1, IP2, FIP3, IPD2, NEMO, FIP-3, Fip3p, AMCBX1, IKK-gamma
Molecular Weight(MW)	48kDa
Sequence	419 amino acids

Database Links

Entrez Gene	8517
SwissProt ID	Q9Y6K9
Protein Accession	NP_003630

Application



Application

Lanes:

1. 100 ug mouse testis lysate
2. 100 ug HeLa cell lysate

Primary Antibody Dilution:

1:800

Secondary Antibody:

Anti-rabbit-AP

Secondary Antibody Dilution:

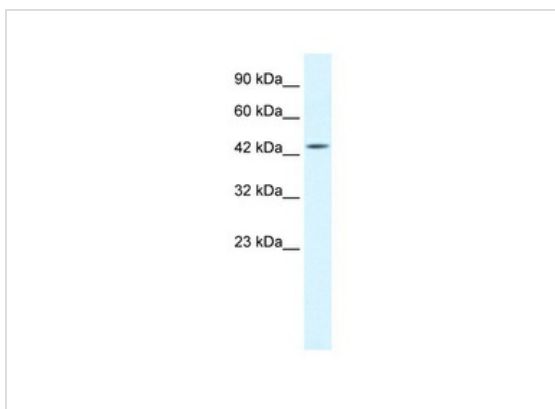
1:10000

Gene Name:

IKBKG

Submitted by:

Andreia Carvalho, Instituto de Biologia Molecular e Celular, Universidade do Porto (IBMC-UP)/Organelle Biogenesis and Function (OBF) Group



Application

WB Suggested Anti-IKBKG Antibody Titration: 1.25ug/ml

ELISA Titer: 1:312500

Positive Control: HepG2 cell lysate

IKBKG is strongly supported by BioGPS gene expression data to be expressed in Human HepG2 cells

Application Notes **WB:**1:500~1:2000

Notes:Optimal dilutions/concentrations should be determined by the researcher.

Additional Information

Form	Liquid
Storage Instructions	Aliquot and store at -20°C. Avoid repeated freeze / thaw cycles

Storage Buffer

phosphate buffered saline , pH 7.4, 150mM NaCl, 0.02% sodium azide and 50% glycerol.

Note

The product is for research use only,not for use in diagnostic or therapeutic procedures.

OmnimAbs.com

order@Omnimabs.com

506 N. GARFIELD AVE #210 ALHAMBRA, CA 91801

This product is for research use only and is not approved for use in humans or in clinical diagnosis. Primary Antibodies are guaranteed for 1 year from date of receipt

