



Catalog: OM105571

Scan to get more validated information



# Rabbit anti-INSM1 polyclonal antibody - middle region

Catalog: OM105571

☐ 100ug

## Product profile

Product name	Rabbit anti-INSM1 polyclonal antibody - middle region
Antibody Type	Primary Antibodies
Immunogen	The immunogen for anti-INSM1 antibody: synthetic peptide directed towards the middle region of human INSM1

## Key Feature

Clonality	Polyclonal
Isotype	IgG
Host Species	Rabbit
Tested Applications	WB ,IHC
Species Reactivity	Bovine Dog Human Mouse Pig Zebra Fish
Concentration	1 mg/ml
Purification	Protein A

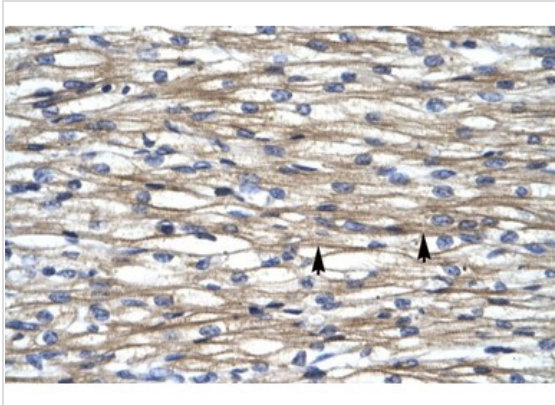
## Target Information

Gene Symbol	INSM1
Gene Synonyms	IA1; IA-1
Gene Full Name	Insulinoma-associated 1
Gene Summary	Insulinoma-associated 1 (INSM1) gene is intronless and encodes a protein containing both a zinc finger DNA-binding domain and a putative prohormone domain. This gene is a sensitive marker for neuroendocrine differentiation of human lung tumors.
Alternative Names	IA1, IA-1
Molecular Weight(MW)	53kDa
Sequence	510 amino acids

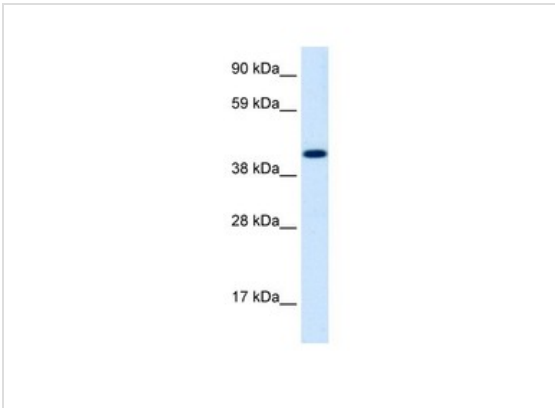
## Database Links

Entrez Gene	3642
SwissProt ID	Q01101
Protein Accession	NP_002187

## Application



Immunohistochemical



Western blot  
1.25ug/ml  
Positive Control: Human Cerebellum

Application Notes	WB:1:500~1:2000 IHC:1:50~1:200 Notes:Optimal dilutions/concentrations should be determined by the researcher.
-------------------	---

## Additional Information

Form	Liquid
Storage Instructions	Aliquot and store at -20°C. Avoid repeated freeze / thaw cycles
Storage Buffer	phosphate buffered saline , pH 7.4, 150mM NaCl, 0.02% sodium azide and 50% glycerol.
Note	The product is for research use only,not for use in diagnostic or therapeutic procedures.

OmnimAbs.com

This product is for research use only and is not approved for use in humans or in clinical diagnosis. Primary Antibodies are guaranteed for 1 year from date of receipt

