



Catalog: OM105577

Scan to get more validated information



Rabbit anti-IRF5 polyclonal antibody - middle region

Catalog: OM105577

☐ 100ug

Product profile

Product name	Rabbit anti-IRF5 polyclonal antibody - middle region
Antibody Type	Primary Antibodies
Immunogen	The immunogen for anti-IRF5 antibody: synthetic peptide directed towards the middle region of human IRF5

Key Feature

Clonality	Polyclonal
Isotype	IgG
Host Species	Rabbit
Tested Applications	WB
Species Reactivity	Bovine Dog Guinea Pig Horse Human Mouse Rabbit Rat Zebra Fish
Concentration	1 mg/ml
Purification	Affinity purified

Target Information

Gene Symbol	IRF5
Gene Synonyms	SLEB10
Gene Full Name	Interferon regulatory factor 5
Gene Summary	IRF5 is a member of the interferon regulatory factor (IRF) family, a group of transcription factors with diverse roles, including virus-mediated activation of interferon, and modulation of cell growth, differentiation, apoptosis, and immune system activity. Members of the IRF family are characterized by a conserved N-terminal DNA-binding domain containing tryptophan (W) repeats. Alternative splice variants encoding different isoforms exist. This gene encodes a member of the interferon regulatory factor (IRF) family, a group of transcription factors with diverse roles, including virus-mediated activation of interferon, and modulation of cell growth, differentiation, apoptosis, and immune system activity. Members of the IRF family are characterized by a conserved N-terminal DNA-binding domain containing tryptophan (W) repeats. Alternati

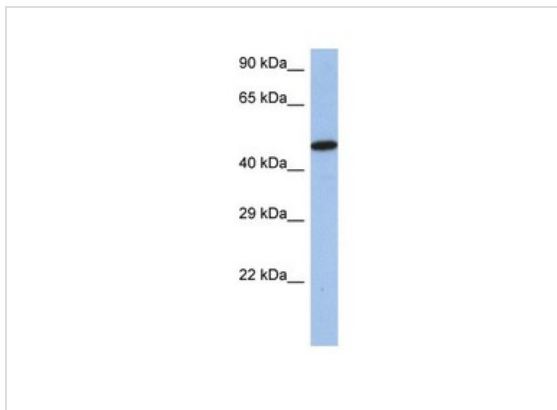
ve splice variants encoding different isoforms exist.

Alternative Names	SLEB10
Molecular Weight(MW)	56kDa
Sequence	498 amino acids

Database Links

Entrez Gene	3663
SwissProt ID	Q13568
Protein Accession	NP_116032

Application



Western blot
0.2-1 ug/ml
ELISA Titer: 1:312500
Positive Control: SH-SY5Y cell lysate

Application Notes	WB: 1:500~1:2000 Notes: Optimal dilutions/concentrations should be determined by the researcher.
--------------------------	---

Additional Information

Form	Liquid
Storage Instructions	Aliquot and store at -20°C. Avoid repeated freeze / thaw cycles
Storage Buffer	phosphate buffered saline , pH 7.4, 150mM NaCl, 0.02% sodium azide and 50% glycerol.
Note	The product is for research use only,not for use in diagnostic or therapeutic procedures.

OmnimAbs.com

order@Omnimabs.com

506 N. GARFIELD AVE #210 ALHAMBRA, CA 91801

This product is for research use only and is not approved for use in humans or in clinical diagnosis. Primary Antibodies are guaranteed for 1 year from date of receipt