



Catalog: OM111400

Scan to get more validated information



# Rabbit anti-IRF6 polyclonal antibody - C-terminal region

Catalog: OM111400

☐ 100ug

## Product profile

Product name	Rabbit anti-IRF6 polyclonal antibody - C-terminal region
Antibody Type	Primary Antibodies
Immunogen	The immunogen for anti-IRF6 antibody: synthetic peptide directed towards the C terminal of human IRF6

## Key Feature

Clonality	Polyclonal
Isotype	IgG
Host Species	Rabbit
Tested Applications	WB
Species Reactivity	Bovine Dog Horse Human Mouse Pig Rabbit Rat Sheep
Concentration	1 mg/ml
Purification	Protein A

## Target Information

Gene Symbol	IRF6
Gene Synonyms	LPS; OFC6; PIT; PPS; VWS; VWS1
Gene Full Name	Interferon regulatory factor 6
Gene Summary	<p>IRF6 is a member of the interferon regulatory transcription factor (IRF) family. Family members share a highly-conserved N-terminal helix-turn-helix DNA-binding domain and a less conserved C-terminal protein-binding domain. Mutations in its gene can cause van der Woude syndrome and popliteal pterygium syndrome. This protein is involved in palate formation. The protein encoded by this gene shares strong similarity with <i>Saccharomyces cerevisiae</i> Cdc23, a protein essential for cell cycle progression through the G2/M transition. This protein is a component of anaphase-promoting complex (APC), which is composed of eight protein subunits and highly conserved in eucaryotic cells. APC catalyzes the formation of cyclin B-ubiquitin conjugate that is responsible for the ubiquitin-mediated proteolysis of B-type cyclins. This protein and 3 other members of the APC complex contain the TPR (tetratricopeptide repeat), a protein domain important</p>

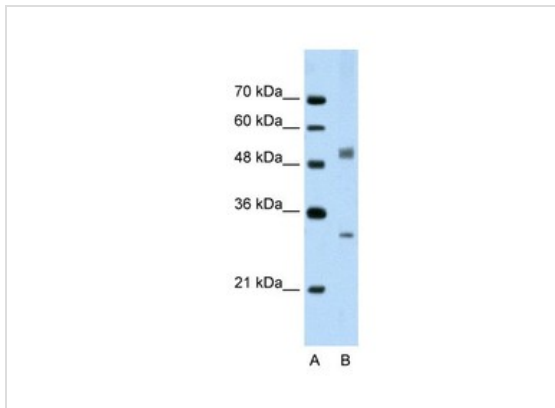
for protein-protein interaction.

<b>Alternative Names</b>	LPS, OFC6, PIT , PPS, VWS, VWS1
<b>Molecular Weight(MW)</b>	65kDa
<b>Sequence</b>	591 amino acids

## Database Links

<b>Entrez Gene</b>	3664
<b>SwissProt ID</b>	O14896
<b>Protein Accession</b>	NP_006138

## Application



**Western blot**  
2.5ug/ml  
Positive Control: Jurkat cell lysate

<b>Application Notes</b>	<b>WB:</b> 1:500~1:2000 <b>Notes:</b> Optimal dilutions/concentrations should be determined by the researcher.
--------------------------	---

## Additional Information

<b>Form</b>	Liquid
<b>Storage Instructions</b>	Aliquot and store at -20°C. Avoid repeated freeze / thaw cycles
<b>Storage Buffer</b>	phosphate buffered saline , pH 7.4, 150mM NaCl, 0.02% sodium azide and 50% glycerol.
<b>Note</b>	The product is for research use only,not for use in diagnostic or therapeutic procedures.

# OmnimAbs.com

order@Omnimabs.com

506 N. GARFIELD AVE #210 ALHAMBRA, CA 91801

This product is for research use only and is not approved for use in humans or in clinical diagnosis. Primary Antibodies are guaranteed for 1 year from date of receipt