



Catalog: OM124796

Scan to get more validated information



Rabbit anti-KLF11 polyclonal antibody

Catalog: OM124796

☐ 100ug

Product profile

Product name	Rabbit anti-KLF11 polyclonal antibody
Antibody Type	Primary Antibodies
Immunogen	The antiserum was produced against synthesized peptide derived from human KLF11.

Key Feature

Clonality	Polyclonal
Host Species	Rabbit
Tested Applications	WB ,ELISA
Species Reactivity	Human Mouse
Concentration	1 mg/ml
Purification	Affinity purified

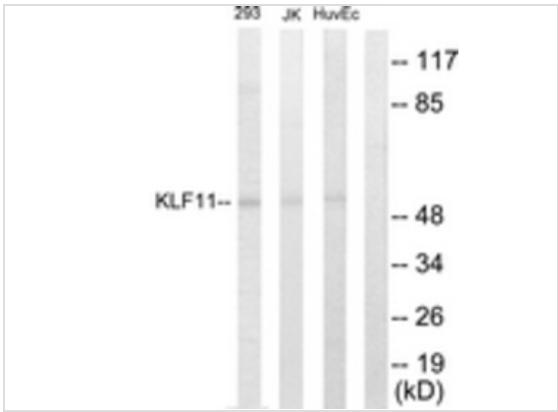
Target Information

Gene Symbol	KLF11
Gene Synonyms	KLF11, Krueppel-like factor 11, TGFB-inducible early growth response protein 2, TIEG-2, transforming growth factor-beta-inducible early growth response protein 2

Database Links

Entrez Gene	8462
Unigene	12229 694968
OMIM	603301 606391 610508
SwissProt ID	O14901

Application



Western blot
Western blot analysis of extracts from 293/Jurkat/HuvEc cells, using KLF11 Antibody. The lane on the right is treated with the synthesized peptide

Application Notes	WB:1:500~1:1000
	ELISA:1:20000

Additional Information

Form	Liquid
Storage Instructions	store at -20°C. Avoid repeated freeze / thaw cycles
Storage Buffer	Rabbit IgG in phosphate buffered saline (without Mg ²⁺ and Ca ²⁺), pH 7.4, 150mM NaCl, 0.02% sodium azide and 50% glycerol.
Note	The product is for research use only,not for use in diagnostic or therapeutic procedures.

OmnimAbs.com

order@Omnimabs.com
506 N. GARFIELD AVE #210 ALHAMBRA, CA 91801
This product is for research use only and is not approved for use in humans or in clinical diagnosis. Primary Antibodies are guaranteed for 1 year from date of receipt