



Catalog: OM105094

Scan to get more validated information



Rabbit anti-KLF11 polyclonal antibody - N-terminal region

Catalog: OM105094

☐ 100ug

Product profile

Product name	Rabbit anti-KLF11 polyclonal antibody - N-terminal region
Antibody Type	Primary Antibodies
Immunogen	The immunogen for anti-KLF11 antibody: synthetic peptide directed towards the N terminal of human KLF11

Key Feature

Clonality	Polyclonal
Isotype	IgG
Host Species	Rabbit
Tested Applications	WB
Species Reactivity	Bovine Dog Horse Human Pig Rabbit
Concentration	1 mg/ml
Purification	Protein A

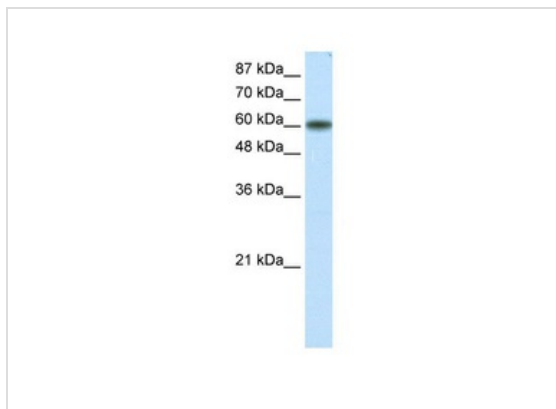
Target Information

Gene Symbol	KLF11
Gene Synonyms	KLF11
Gene Full Name	Kruppel-like factor 11
Gene Summary	KLF11 (TIEG2) is a pancreas-enriched transcription factor that has elicited significant attention because of its role as negative regulator of exocrine cell growth in vitro and in vivo. It plays a role in the regulation of pancreatic beta cell physiology, and its variants may contribute to the development of diabetes.
Alternative Names	FKLF, FKLF1, MODY7, TIEG2, Tieg3
Molecular Weight(MW)	55kDa
Sequence	512 amino acids

Database Links

Entrez Gene	8462
SwissProt ID	O14901
Protein Accession	NP_003588

Application



Application

WB Suggested Anti-KLF11 Antibody Titration: 1.25ug/ml

ELISA Titer: 1:1562500

Positive Control: Transfected 293T

Application Notes

WB:1:500~1:2000

Notes:Optimal dilutions/concentrations should be determined by the researcher.

Additional Information

Form	Liquid
Storage Instructions	Aliquot and store at -20°C. Avoid repeated freeze / thaw cycles
Storage Buffer	phosphate buffered saline , pH 7.4, 150mM NaCl, 0.02% sodium azide and 50% glycerol.
Note	The product is for research use only,not for use in diagnostic or therapeutic procedures.

OmnimAbs.com

order@Omnimabs.com

506 N. GARFIELD AVE #210 ALHAMBRA, CA 91801

This product is for research use only and is not approved for use in humans or in clinical diagnosis. Primary Antibodies are guaranteed for 1 year from date of receipt