



Catalog: OM109369

Scan to get more validated information



Rabbit anti-KLF16 polyclonal antibody - N-terminal region

Catalog: OM109369

☐ 100ug

Product profile

Product name	Rabbit anti-KLF16 polyclonal antibody - N-terminal region
Antibody Type	Primary Antibodies
Immunogen	The immunogen for anti-KLF16 antibody: synthetic peptide directed towards the N terminal of human KLF16

Key Feature

Clonality	Polyclonal
Isotype	IgG
Host Species	Rabbit
Tested Applications	WB
Species Reactivity	Human Mouse Pig Rat
Concentration	1 mg/ml
Purification	Affinity purified

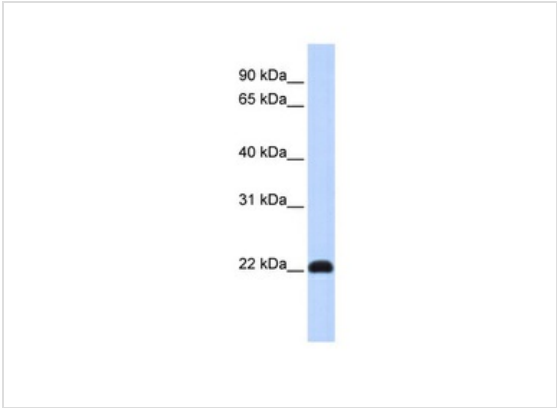
Target Information

Gene Symbol	KLF16
Gene Synonyms	KLF16
Gene Full Name	Kruppel-like factor 16
Gene Summary	KLF16 is a transcription factor that binds GC and GT boxes and displaces Sp1 and Sp3 from these sequences. KLF16 modulates dopaminergic transmission in the brain.
Alternative Names	BTEB4, DRRF, NSLP2
Molecular Weight(MW)	25kDa
Sequence	252 amino acids

Database Links

Entrez Gene	83855
SwissProt ID	Q9BXK1
Protein Accession	NP_114124

Application



Application
WB Suggested Anti-KLF16 Antibody Titration: 0.2-1 ug/ml
ELISA Titer: 1:62500
Positive Control: Human Muscle

Application Notes	WB: 1:500~1:2000 Notes: Optimal dilutions/concentrations should be determined by the researcher.
-------------------	---

Additional Information

Form	Liquid
Storage Instructions	Aliquot and store at -20°C. Avoid repeated freeze / thaw cycles
Storage Buffer	phosphate buffered saline , pH 7.4, 150mM NaCl, 0.02% sodium azide and 50% glycerol.
Note	The product is for research use only,not for use in diagnostic or therapeutic procedures.

OmnimAbs.com

order@Omnimabs.com
506 N. GARFIELD AVE #210 ALHAMBRA, CA 91801
This product is for research use only and is not approved for use in humans or in clinical diagnosis. Primary Antibodies are guaranteed for 1 year from date of receipt

