



Catalog: OM105124

Scan to get more validated information



# Rabbit anti-KLF16 polyclonal antibody - middle region

Catalog: OM105124

☐ 100ug

## Product profile

Product name	Rabbit anti-KLF16 polyclonal antibody - middle region
Antibody Type	Primary Antibodies
Immunogen	The immunogen for anti-KLF16 antibody: synthetic peptide directed towards the middle region of human KLF16

## Key Feature

Clonality	Polyclonal
Isotype	IgG
Host Species	Rabbit
Tested Applications	WB
Species Reactivity	Human Pig
Concentration	1 mg/ml
Purification	Affinity purified

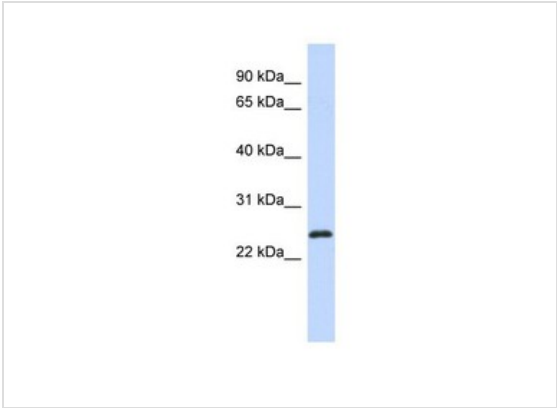
## Target Information

Gene Symbol	KLF16
Gene Synonyms	BTEB4; DRRF; NSLP2
Gene Full Name	Kruppel-like factor 16
Gene Summary	KLF16 is a transcription factor that binds GC and GT boxes and displaces Sp1 and Sp3 from these sequences. KLF16 modulates dopaminergic transmission in the brain.
Alternative Names	BTEB4, DRRF, NSLP2
Molecular Weight(MW)	25kDa
Sequence	252 amino acids

## Database Links

Entrez Gene	83855
SwissProt ID	Q9BXK1
Protein Accession	NP_114124

## Application



**Western blot**  
0.2-1 ug/ml  
ELISA Titer: 1:12500  
Positive Control: Human heart

Application Notes	WB:1:500~1:2000 <b>Notes:</b> Optimal dilutions/concentrations should be determined by the researcher.
-------------------	---

## Additional Information

Form	Liquid
Storage Instructions	Aliquot and store at -20°C. Avoid repeated freeze / thaw cycles
Storage Buffer	phosphate buffered saline , pH 7.4, 150mM NaCl, 0.02% sodium azide and 50% glycerol.
Note	The product is for research use only,not for use in diagnostic or therapeutic procedures.

# OmnimAbs.com

order@Omnimabs.com  
506 N. GARFIELD AVE #210 ALHAMBRA, CA 91801  
This product is for research use only and is not approved for use in humans or in clinical diagnosis. Primary Antibodies are guaranteed for 1 year from date of receipt