



Catalog: OM105583

Scan to get more validated information



Rabbit anti-LMX1A polyclonal antibody - middle region

Catalog: OM105583

☐ 100ug

Product profile

Product name	Rabbit anti-LMX1A polyclonal antibody - middle region
Antibody Type	Primary Antibodies
Immunogen	The immunogen for anti-LMX1A antibody: synthetic peptide directed towards the middle region of human LMX1A

Key Feature

Clonality	Polyclonal
Isotype	IgG
Host Species	Rabbit
Tested Applications	WB
Species Reactivity	Bovine Dog Horse Human Mouse Rat
Concentration	1 mg/ml
Purification	Affinity purified

Target Information

Gene Symbol	LMX1A
Gene Synonyms	LMX-1; LMX1; LMX1.1; MGC87616
Gene Full Name	LIM homeobox transcription factor 1, alpha
Gene Summary	<p>Insulin is produced exclusively by the beta cells in the islets of Langerhans in the pancreas. The level and beta-cell specificity of insulin gene expression are regulated by a set of nuclear genes that bind to specific sequences within the promoter of the insulin gene (INS; MIM 176730) and interact with RNA polymerase to activate or repress transcription. LMX1 is a homeodomain protein that binds an A/T-rich sequence in the insulin promoter and stimulates transcription of insulin. Insulin is produced exclusively by the beta cells in the islets of Langerhans in the pancreas. The level and beta-cell specificity of insulin gene expression are regulated by a set of nuclear genes that bind to specific sequences within the promoter of the insulin gene (INS; MIM 176730) and interact with RNA polymerase to activate or repress transcription. LMX1 is a h</p>

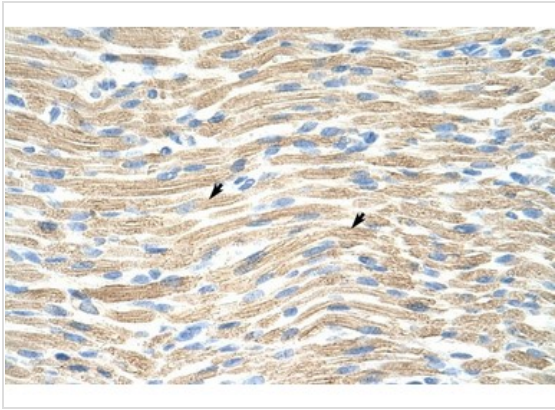
omeodomain protein that binds an A/T-rich sequence in the insulin promoter and stimulates transcription of insulin (German et al., 1994 [PubMed 7698771]).[supplied by OMIM]. PRIMARYREFSEQ_SPAN PRIMARY_IDENTIFIER PRIMARY_SPAN COMP 1-199 AL160058.8 14249-14447 c 200-2447 AK127724.1 362-2609 2448-3382 AL390730.12 94 15-10349 c

Alternative Names	LMX-1, LMX1, LMX1.1, MGC87616
Molecular Weight(MW)	43kDa
Sequence	382 amino acids

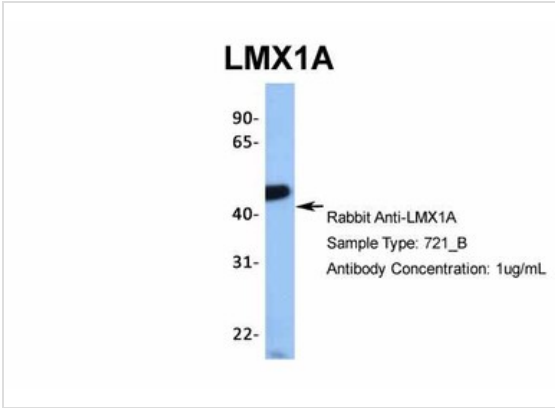
Database Links

Entrez Gene	4009
SwissProt ID	Q8TE12
Protein Accession	NP_796372

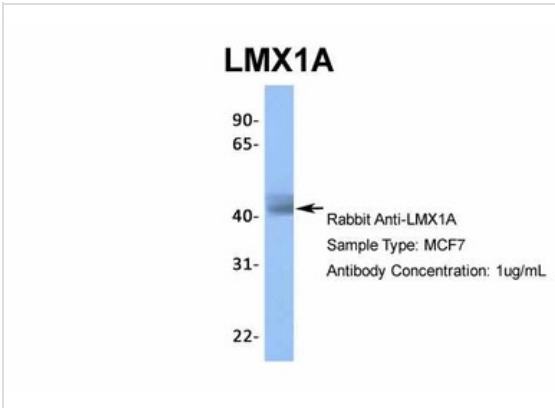
Application



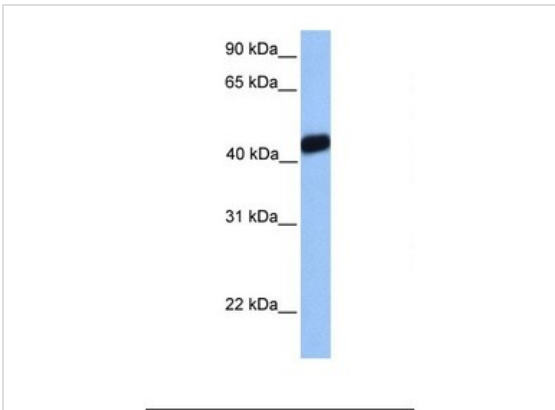
Immunohistochemical
 Rabbit Anti-LMX1A AntibodyParaffin Embedded Tissue: Human MuscleCellular
 Data: Skeletal muscle cellsAntibody Concentration: 4.0-8.0 ug/mlMagnification:
 400X



Western blot
 Host: Rabbit
 Target Name: TRIM10
 Sample Tissue: 721_B
 Antibody Dilution: 1.0ug/ml



Western blot
 Host: Rabbit
 Target Name: LMX1A
 Sample Tissue: MCF7
 Antibody Dilution: 1.0ug/ml



Western blot
 Titration: 1 ug/ml
 Positive Control: 721_B Whole Cell

Application Notes **WB:**1:500~1:2000
Notes:Optimal dilutions/concentrations should be determined by the researcher.

Additional Information

Form Liquid

Storage Instructions Aliquot and store at -20°C. Avoid repeated freeze / thaw cycles

Storage Buffer

phosphate buffered saline , pH 7.4, 150mM NaCl, 0.02% sodium azide and 50% glycerol.

Note

The product is for research use only,not for use in diagnostic or therapeutic procedures.

OmnimAbs.com

order@Omnimabs.com

506 N. GARFIELD AVE #210 ALHAMBRA, CA 91801

This product is for research use only and is not approved for use in humans or in clinical diagnosis. Primary Antibodies are guaranteed for 1 year from date of receipt
