



Catalog: OM105122

Scan to get more validated information



Rabbit anti-MIXL1 polyclonal antibody - N-terminal region

Catalog: OM105122

☐ 100ug

Product profile

Product name	Rabbit anti-MIXL1 polyclonal antibody - N-terminal region
Antibody Type	Primary Antibodies
Immunogen	The immunogen for anti-MIXL1 antibody: synthetic peptide directed towards the N terminal of human MIXL1

Key Feature

Clonality	Polyclonal
Isotype	IgG
Host Species	Rabbit
Tested Applications	WB
Species Reactivity	Human
Concentration	1 mg/ml
Purification	Affinity purified

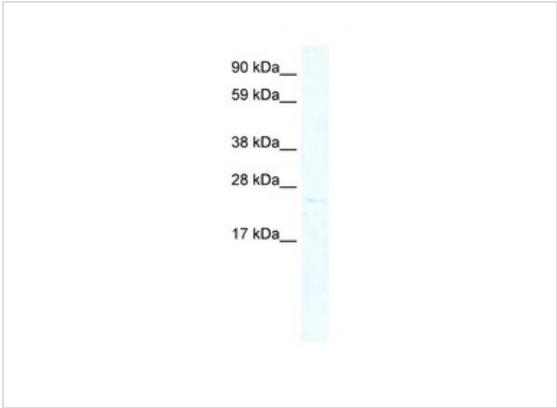
Target Information

Gene Symbol	MIXL1
Gene Synonyms	MIXL1
Gene Full Name	Mix paired-like homeobox
Gene Summary	MIXL1 is a novel human Mix-like homeobox gene. In normal hematopoiesis, its expression appears to be restricted to immature B- and T-lymphoid cells.
Alternative Names	MIX, MIXL, MILD1
Molecular Weight(MW)	25kDa
Sequence	232 amino acids

Database Links

Entrez Gene	83881
SwissProt ID	Q9H2W2
Protein Accession	NP_114150

Application



Application
WB Suggested Anti-MIXL1 Antibody Titration: 0.2-1 ug/ml
ELISA Titer: 1:312500
Positive Control: Human heart

Application Notes	WB: 1:500~1:2000 Notes: Optimal dilutions/concentrations should be determined by the researcher.
-------------------	---

Additional Information

Form	Liquid
Storage Instructions	Aliquot and store at -20°C. Avoid repeated freeze / thaw cycles
Storage Buffer	phosphate buffered saline , pH 7.4, 150mM NaCl, 0.02% sodium azide and 50% glycerol.
Note	The product is for research use only,not for use in diagnostic or therapeutic procedures.

OmnimAbs.com

order@Omnimabs.com
506 N. GARFIELD AVE #210 ALHAMBRA, CA 91801
This product is for research use only and is not approved for use in humans or in clinical diagnosis. Primary Antibodies are guaranteed for 1 year from date of receipt

