



Catalog: OM105595

Scan to get more validated information



Rabbit anti-MTF1 polyclonal antibody - C-terminal region

Catalog: OM105595

☐ 100ug

Product profile

Product name	Rabbit anti-MTF1 polyclonal antibody - C-terminal region
Antibody Type	Primary Antibodies
Immunogen	The immunogen for anti-MTF1 antibody: synthetic peptide directed towards the C terminal of human MTF1

Key Feature

Clonality	Polyclonal
Isotype	IgG
Host Species	Rabbit
Tested Applications	WB
Species Reactivity	Bovine Dog Guinea Pig Horse Human Mouse Rabbit Rat
Concentration	1 mg/ml
Purification	Protein A

Target Information

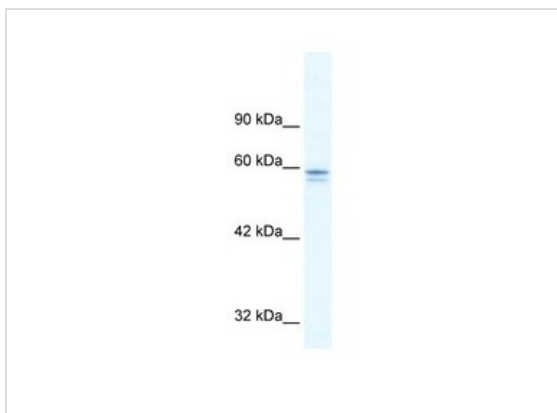
Gene Symbol	MTF1
Gene Synonyms	ZRF; MTF-1
Gene Full Name	Metal-regulatory transcription factor 1
Gene Summary	The zinc finger transcription factor MTF-1 (metal-responsive transcription factor-1) is conserved from insects to vertebrates. The major role of MTF-1 in both organisms is to control the transcription of genes involved in the homeostasis and detoxification of heavy metal ions such as Cu ²⁺ , Zn ²⁺ and Cd ²⁺ . In mammals, MTF-1 serves at least two additional roles. First, targeted disruption of the MTF-1 gene results in death at embryonic day 14 due to liver degeneration, revealing a stage-specific developmental role. Second, under hypoxic-anoxic stress, MTF-1 helps to activate the transcription of the gene placental growth factor (PlGF), an angiogenic protein.

Alternative Names	ZRF, MTF-1
Molecular Weight(MW)	81kDa
Sequence	753 amino acids

Database Links

Entrez Gene	4520
SwissProt ID	Q14872
Protein Accession	NP_005946

Application



Western blot
5.0ug/ml
ELISA Titer: 1:2500
Positive Control: HepG2 cell lysate

Application Notes	WB: 1:500~1:2000 Notes: Optimal dilutions/concentrations should be determined by the researcher.
--------------------------	---

Additional Information

Form	Liquid
Storage Instructions	Aliquot and store at -20°C. Avoid repeated freeze / thaw cycles
Storage Buffer	phosphate buffered saline , pH 7.4, 150mM NaCl, 0.02% sodium azide and 50% glycerol.
Note	The product is for research use only,not for use in diagnostic or therapeutic procedures.

OmnimAbs.com

order@Omnimabs.com

506 N. GARFIELD AVE #210 ALHAMBRA, CA 91801

This product is for research use only and is not approved for use in humans or in clinical diagnosis. Primary Antibodies are guaranteed for 1 year from date of receipt