



Catalog: OM109358

Scan to get more validated information



Rabbit anti-MXD3 Antibody - C-terminal region

Catalog: OM109358

☐ 100ug

Product profile

| | |
|---------------|---|
| Product name | Rabbit anti-MXD3 Antibody - C-terminal region |
| Antibody Type | Primary Antibodies |
| Immunogen | The immunogen for Anti-MXD3 antibody is: synthetic peptide directed towards the C-terminal region of Human MXD3 |

Key Feature

| | |
|---------------------|--|
| Clonality | Polyclonal |
| Isotype | IgG |
| Host Species | Rabbit |
| Tested Applications | WB |
| Species Reactivity | Bovine Dog Guinea Pig Horse Human Mouse Pig Rabbit Rat |
| Concentration | 1 mg/ml |
| Purification | Affinity purified |

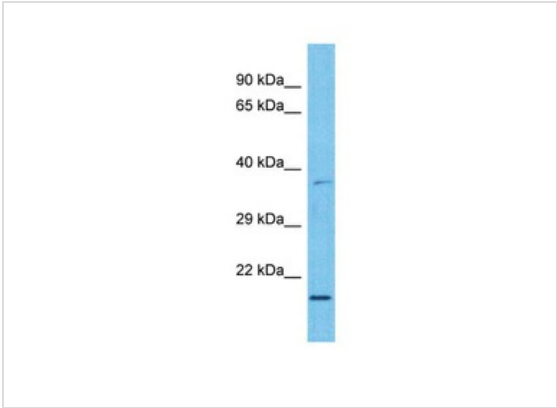
Target Information

| | |
|----------------------|---|
| Gene Symbol | MXD3 |
| Gene Synonyms | MXD3 |
| Gene Full Name | MAX dimerization protein 3 |
| Gene Summary | MXD3 contains 1 basic helix-loop-helix (bHLH) domain. It is a transcriptional repressor and binds with MAX to form a sequence-specific DNA-binding protein complex which recognizes the core sequence 5'-CAC[G A]TG-3'. Antagonizes MYC transcriptional activity by competing for MAX and suppresses MYC dependent cell transformation. |
| Molecular Weight(MW) | 21kDa |
| Sequence | 193 amino acids |

Database Links

| | |
|--------------|----------|
| Entrez Gene | 83463 |
| SwissProt ID | Q9BW11-3 |

Application



Application
Host: Rabbit
Target Name: MXD3
Sample Type: Esophagus Tumor lysates
Antibody Dilution: 1.0ug/ml

| | |
|-------------------|---|
| Application Notes | WB: 1:500~1:2000 Notes: Optimal dilutions/concentrations should be determined by the researcher. |
|-------------------|---|

Additional Information

| | |
|----------------------|---|
| Form | Liquid |
| Storage Instructions | Aliquot and store at -20°C. Avoid repeated freeze / thaw cycles |
| Storage Buffer | phosphate buffered saline , pH 7.4, 150mM NaCl, 0.02% sodium azide and 50% glycerol. |
| Note | The product is for research use only,not for use in diagnostic or therapeutic procedures. |

OmnimAbs.com

order@Omnimabs.com
506 N. GARFIELD AVE #210 ALHAMBRA, CA 91801
This product is for research use only and is not approved for use in humans or in clinical diagnosis. Primary Antibodies are guaranteed for 1 year from date of receipt