



Catalog: OM125260

Scan to get more validated information



Rabbit anti-MYC polyclonal antibody

Catalog: OM125260

☐ 100ug

Product profile

Product name	Rabbit anti-MYC polyclonal antibody
Antibody Type	Tags Antibodies
Immunogen	The antiserum was produced against synthesized peptide derived from human MYC.

Key Feature

Clonality	Polyclonal
Host Species	Rabbit
Tested Applications	WB ,IHC ,ELISA
Species Reactivity	Human Mouse Rat
Concentration	1 mg/ml
Purification	Affinity purified

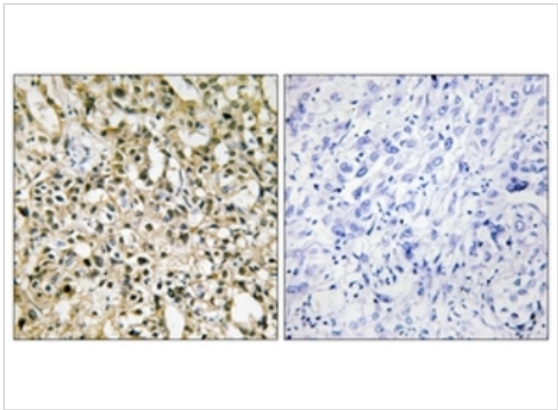
Target Information

Gene Symbol	MYC
Gene Synonyms	Myc proto-oncogene protein; Class E basic helix-loop-helix protein 39; bHLHe39; Proto-oncogene c-Myc; Transcription factor p64 ; MYC ; BHLHE39

Database Links

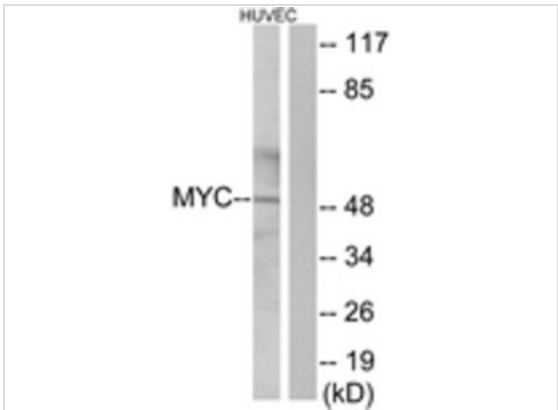
Entrez Gene	4609
Unigene	202453
OMIM	190080 113970
SwissProt ID	P01106

Application



Immunohistochemical

Immunohistochemistry analysis of paraffin-embedded human liver carcinoma tissue, using MYC Antibody. The picture on the right is treated with the synthesized peptide.



Western blot

Western blot analysis of extracts from HuvEc cells, using MYC Antibody. The lane on the right is treated with the synthesized peptide

Application Notes	WB:1:500~1:1000
	IHC:1:50~1:100
	ELISA:1:40000

Additional Information

Form	Liquid
Storage Instructions	store at -20°C. Avoid repeated freeze / thaw cycles
Storage Buffer	Rabbit IgG in phosphate buffered saline (without Mg2+ and Ca2+), pH 7.4, 150mM NaCl, 0.02% sodium azide and 50% glycerol.
Note	The product is for research use only,not for use in diagnostic or therapeutic procedures.

OmnimAbs.com