



Catalog: OM125249

Scan to get more validated information



# Rabbit anti-Myc (Phospho-Ser373) polyclonal antibody

Catalog: OM125249

☐ 100ug

## Product profile

Product name	Rabbit anti-Myc (Phospho-Ser373) polyclonal antibody
Antibody Type	Tags Antibodies
Immunogen	The antiserum was produced against synthesized peptide derived from human Myc around the phosphorylation site of Ser373.

## Key Feature

Clonality	Polyclonal
Host Species	Rabbit
Tested Applications	IHC ,IP ,ELISA
Species Reactivity	Human Mouse Rat
Concentration	1 mg/ml
Purification	Affinity purified

## Target Information

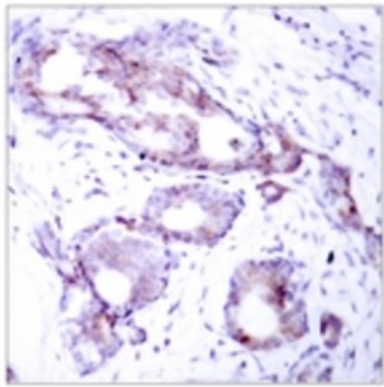
Gene Symbol	MYC
Gene Synonyms	Myc proto-oncogene protein; Class E basic helix-loop-helix protein 39; bHLHe39; Proto-oncogene c-Myc; Transcription factor p64 ; MYC ; BHLHE39

## Database Links

Entrez Gene	9531
Unigene	202453
OMIM	190080
SwissProt ID	P01106

## Application

---



**Immunohistochemical**  
Immunohistochemistry analysis of paraffin-embedded human breast carcinoma, using Myc (Phospho-Ser373) Antibody

**Application Notes**      **IHC:**1:50~1:100  
                                 **ELISA:**1:20000

## Additional Information

---

<b>Form</b>	Liquid
<b>Storage Instructions</b>	store at -20°C. Avoid repeated freeze / thaw cycles
<b>Storage Buffer</b>	Rabbit IgG in phosphate buffered saline (without Mg <sup>2+</sup> and Ca <sup>2+</sup> ), pH 7.4, 150mM NaCl, 0.02% sodium azide and 50% glycerol.
<b>Note</b>	The product is for research use only,not for use in diagnostic or therapeutic procedures.

# OmnimAbs.com

---

order@Omnimabs.com  
506 N. GARFIELD AVE #210 ALHAMBRA, CA 91801  
This product is for research use only and is not approved for use in humans or in clinical diagnosis. Primary Antibodies are guaranteed for 1 year from date of receipt