



Catalog: OM105607

Scan to get more validated information



Rabbit anti-NAB2 Antibody - N-terminal region

Catalog: OM105607

☐ 100ug

Product profile

| | |
|---------------|--|
| Product name | Rabbit anti-NAB2 Antibody - N-terminal region |
| Antibody Type | Primary Antibodies |
| Immunogen | The immunogen for Anti-NAB2 antibody is: synthetic peptide directed towards the N-terminal region of H uman NAB2 |

Key Feature

| | |
|---------------------|-----------------------------|
| Clonality | Polyclonal |
| Isotype | IgG |
| Host Species | Rabbit |
| Tested Applications | WB |
| Species Reactivity | Bovine Dog Human Pig Rabbit |
| Concentration | 1 mg/ml |
| Purification | Affinity purified |

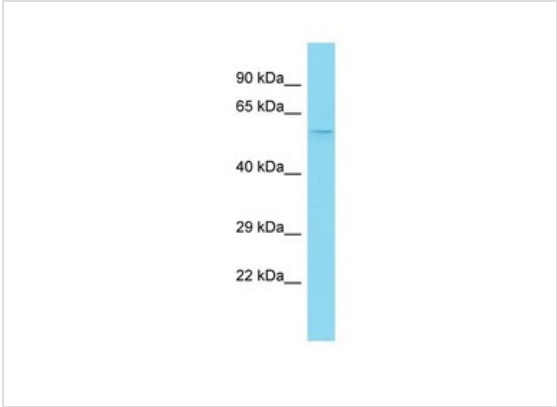
Target Information

| | |
|----------------------|---|
| Gene Symbol | NAB2 |
| Gene Synonyms | MADER |
| Gene Full Name | NGFI-A binding protein 2 (EGR1 binding protein 2) |
| Gene Summary | NAB2 is a member of the family of NGFI-A binding (NAB) proteins, which function in the nucleus to repress transcription induced by some members of the EGR (early growth response) family of transactivators. NAB proteins can homo- or hetero-multimerize with |
| Alternative Names | MADER |
| Molecular Weight(MW) | 56kDa |
| Sequence | 525 amino acids |

Database Links

| | |
|-------------------|-----------|
| Entrez Gene | 4665 |
| SwissProt ID | Q15742 |
| Protein Accession | NP_005958 |

Application



Western blot
Host: Rabbit
Target Name: NAB2
Sample Tissue: Fetal Thymus lysates
Antibody Dilution: 1.0ug/ml

| | |
|-------------------|---|
| Application Notes | WB: 1:500~1:2000 Notes: Optimal dilutions/concentrations should be determined by the researcher. |
|-------------------|---|

Additional Information

| | |
|----------------------|---|
| Form | Liquid |
| Storage Instructions | Aliquot and store at -20°C. Avoid repeated freeze / thaw cycles |
| Storage Buffer | phosphate buffered saline , pH 7.4, 150mM NaCl, 0.02% sodium azide and 50% glycerol. |
| Note | The product is for research use only,not for use in diagnostic or therapeutic procedures. |

OmnimAbs.com

order@Omnimabs.com
506 N. GARFIELD AVE #210 ALHAMBRA, CA 91801
This product is for research use only and is not approved for use in humans or in clinical diagnosis. Primary Antibodies are guaranteed for 1 year from date of receipt