



Catalog: OM105573

Scan to get more validated information



Rabbit anti-Pdx1 polyclonal antibody - N-terminal region

Catalog: OM105573

☐ 100ug

Product profile

Product name	Rabbit anti-Pdx1 polyclonal antibody - N-terminal region
Antibody Type	Primary Antibodies

Key Feature

Clonality	Polyclonal
Isotype	IgG
Host Species	Rabbit
Tested Applications	WB
Species Reactivity	Bovine Dog Guinea Pig Human Mouse Pig Rabbit Rat
Concentration	1 mg/ml
Purification	Affinity purified

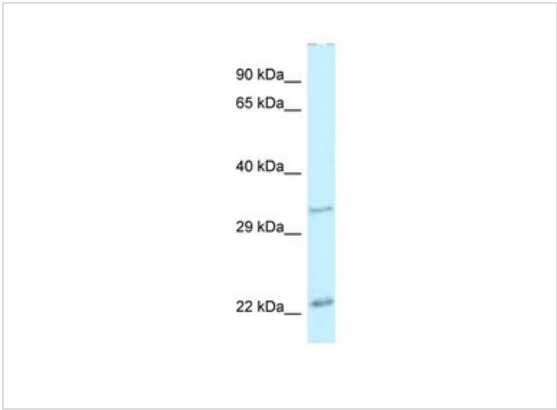
Target Information

Gene Symbol	Pdx1
Gene Synonyms	IDX-1; IPF-1; Ipf1; Mody4; STF-1; pdx-1
Gene Full Name	Pancreatic and duodenal homeobox 1
Gene Summary	Pdx1 activates insulin and somatostatin gene transcription. It is a key regulator of islet peptide hormone expression but also responsible for the development of the pancreas, most probably by determining maturation and differentiation of common pancreatic precursor cells in the developing gut. It binds the DNA sequence 5'-CC[CT]TAATGGG-3'.
Alternative Names	IDX-1, IPF-1, Ipf1, Mody4, STF-1, pdx-1
Molecular Weight(MW)	31kDa
Sequence	284 amino acids

Database Links

Entrez Gene	18609
SwissProt ID	P52946
Protein Accession	NP_032840

Application



Western blot
Titration: 1.0 ug/ml
Positive Control: Mouse Pancreas

Application Notes	WB: 1:500~1:2000 Notes: Optimal dilutions/concentrations should be determined by the researcher.
-------------------	---

Additional Information

Form	Liquid
Storage Instructions	Aliquot and store at -20°C. Avoid repeated freeze / thaw cycles
Storage Buffer	phosphate buffered saline , pH 7.4, 150mM NaCl, 0.02% sodium azide and 50% glycerol.
Note	The product is for research use only,not for use in diagnostic or therapeutic procedures.

OmnimAbs.com

order@Omnimabs.com
506 N. GARFIELD AVE #210 ALHAMBRA, CA 91801
This product is for research use only and is not approved for use in humans or in clinical diagnosis. Primary Antibodies are guaranteed for 1 year from date of receipt