



Catalog: OM105129

Scan to get more validated information



Rabbit anti-RBM10 polyclonal antibody - N-terminal region

Catalog: OM105129

☐ 100ug

Product profile

Product name	Rabbit anti-RBM10 polyclonal antibody - N-terminal region
Antibody Type	Primary Antibodies
Immunogen	The immunogen for anti-RBM10 antibody: synthetic peptide directed towards the N terminal of human RBM10

Key Feature

Clonality	Polyclonal
Isotype	IgG
Host Species	Rabbit
Tested Applications	WB ,IHC
Species Reactivity	Bovine Dog Guinea Pig Horse Human Mouse Pig Rabbit
Concentration	1 mg/ml
Purification	Protein A

Target Information

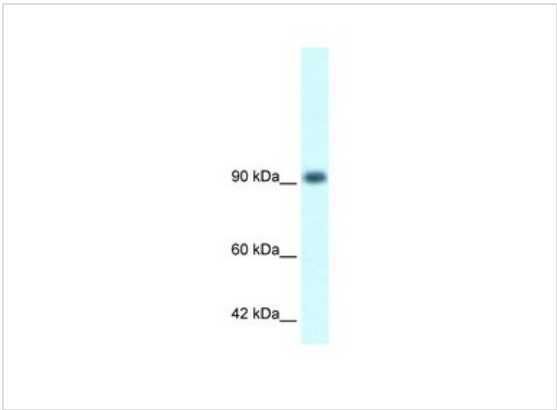
Gene Symbol	RBM10
Gene Synonyms	S1-1; TARPS; GPATC9; ZRANB5; GPATCH9; DXS8237E
Gene Full Name	RNA binding motif protein 10
Gene Summary	RBM10 contains RNA recognition motif found in a variety of RNA binding proteins, including various hnRNP proteins, proteins implicated in regulation of alternative splicing, and protein components of snRNPs. In vitro studies showed that the rat homolog bound to RNA homopolymers, with a preference for G and U polyribonucleotides. This gene is part of a gene cluster on chromosome Xp11.23, and its 3' end lies within 20 kb upstream of UBE1.
Alternative Names	S1-1, TARPS, GPATC9, ZRANB5, GPATCH9, DXS8237E

Molecular Weight(MW)	104kDa
Sequence	930 amino acids

Database Links

Entrez Gene	8241
SwissProt ID	P98175
Protein Accession	NP_005667

Application



Western blot
 1.4ug/ml
 ELISA Titer: 1:1562500
 Positive Control: Daudi cell lysate

Application Notes	WB: 1:500~1:2000 IHC: 1:50~1:200 Notes: Optimal dilutions/concentrations should be determined by the researcher.
--------------------------	---

Additional Information

Form	Liquid
Storage Instructions	Aliquot and store at -20°C. Avoid repeated freeze / thaw cycles
Storage Buffer	phosphate buffered saline , pH 7.4, 150mM NaCl, 0.02% sodium azide and 50% glycerol.
Note	The product is for research use only,not for use in diagnostic or therapeutic procedures.

OmnimAbs.com

order@Omnimabs.com
 506 N. GARFIELD AVE #210 ALHAMBRA, CA 91801
 This product is for research use only and is not approved for use in humans or in clinical diagnosis. Primary Antibodies are guaranteed for 1 year from date of receipt

