



Catalog: OM105169

Scan to get more validated information



Rabbit anti-RELA polyclonal antibody - middle region

Catalog: OM105169

☐ 100ug

Product profile

Product name	Rabbit anti-RELA polyclonal antibody - middle region
Antibody Type	Primary Antibodies
Immunogen	The immunogen for anti-RELA antibody: synthetic peptide directed towards the middle region of human RELA

Key Feature

Clonality	Polyclonal
Isotype	IgG
Host Species	Rabbit
Tested Applications	WB
Species Reactivity	Bovine Mouse Pig Rat
Concentration	1 mg/ml
Purification	Affinity purified

Target Information

Gene Symbol	RELA
Gene Synonyms	MGC131774; NFKB3; p65
Gene Full Name	V-rel reticuloendotheliosis viral oncogene homolog A (avian)
Gene Summary	<p>p65 is a subunit of the nuclear factor kappa-B, a second messenger, which activates the transcription of a number of genes in multiple tissues. The inhibitory effect of I-kappa-B upon NF-kappa-B in the cytoplasm is exerted primarily through the interaction with p65. p65 shows a weak DNA-binding site which could contribute directly to DNA binding in the NF-kappa-B complex. NFKB1 (MIM 164011) or NFKB2 (MIM 164012) is bound to REL (MIM 164910), RELA, or RELB (MIM 604758) to form the NFKB complex. The p50 (NFKB1)/p65 (RELA) heterodimer is the most abundant form of NFKB. The NFKB complex is inhibited by I-kappa-B proteins (NFKBIA, MIM 164008 or NFKBIB, MIM 604495), which inactivate NFKB by trapping it in the cytoplasm. Phosphorylation of serine residues on the I-kappa-B proteins by kinases (IKBKA, MIM 600664, or</p>

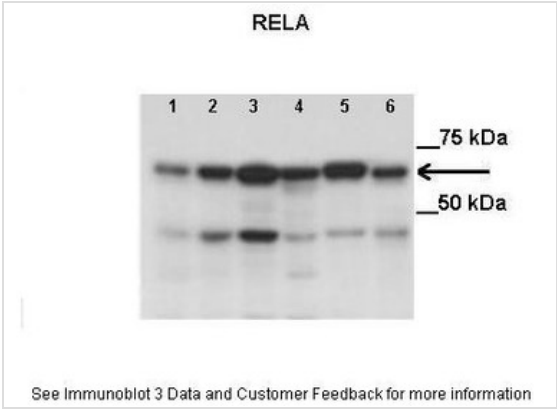
IKKB, MIM 603258) marks them for destruction via the ubiquitination pathway, thereby allowing activation of the NFkB complex. Activated NFkB complex translocates into the nucleus and binds DNA at kappa-B-binding motifs such as 5-prime GGGRNNYYCC 3-prime or 5-prime HGGARNYYCC 3-prime (where H is A, C, or T; R is an A or G purine; and Y is a C or T pyrimidine).[supplied by OMIM]. Publication Note: This RefSeq record includes a subset of the publications that are available for this gene. Please see the Entrez Gene record to access additional publications. PRIMARYREFSEQ_SPAN PRIMARY_IDENTIFIER PRIMARY_SPAN COMP 1-1760 M62399.1 8-1767

Alternative Names	MGC131774, NFkB3, p65
Molecular Weight(MW)	60kDa
Sequence	551 amino acids

Database Links

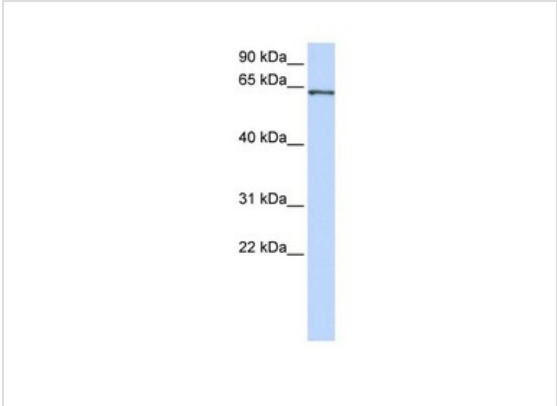
Entrez Gene	5970
SwissProt ID	Q04206
Protein Accession	NP_068810

Application

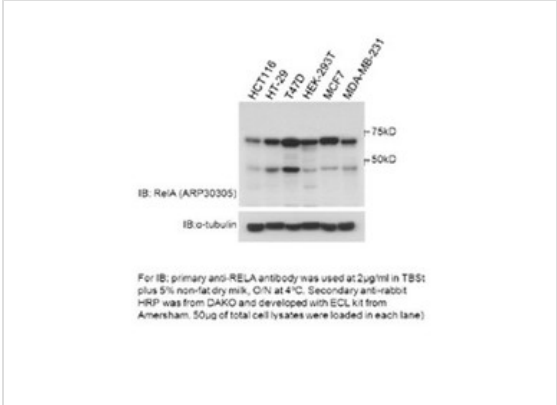


Immunoblot
Lane1: 50 ug HCT 116 cell lysate
Lane2: 50 ug HT-29 cell lysate
Lane3: 50 ug T47D cell lysate
Lane4: 50 ug HEK-293T cell lysate
Lane5: 50 ug MCF7 cell lysate
Lane6: 50 ug MDA-MB-231 cell lysate
Primary Antibody Dilution:
2 ug/ml
Secondary Antibody:
Anti-Rabbit HRP
Secondary Antibody Dilution:

Gene Name:
RELA
Submitted by:
Anonymous



Western blot
0.2-1 ug/ml
ELISA Titer: 1:312500
Positive Control: Jurkat cell lysate



Western blot
RELA antibody - middle region validated by WB using HCT 116/Ht-29/T47D/HEK-293T/MCF/MDA-MB-231 cell lines at 2ug/ml.

Application Notes **WB:**1:500~1:2000
Notes:Optimal dilutions/concentrations should be determined by the researcher.

Additional Information

Form	Liquid
Storage Instructions	Aliquot and store at -20°C. Avoid repeated freeze / thaw cycles
Storage Buffer	phosphate buffered saline , pH 7.4, 150mM NaCl, 0.02% sodium azide and 50% glycerol.
Note	The product is for research use only,not for use in diagnostic or therapeutic procedures.

OmnimAbs.com

order@Omnimabs.com
506 N. GARFIELD AVE #210 ALHAMBRA, CA 91801
This product is for research use only and is not approved for use in humans or in clinical diagnosis. Primary Antibodies are guaranteed for 1 year from date of receipt
