



Catalog: OM105154

Scan to get more validated information



Rabbit anti-RGD1560888 Antibody - N-terminal region

Catalog: OM105154

☐ 100ug

Product profile

| | |
|---------------|---------------------------------------------------------------------------------------------------------------------------|
| Product name | Rabbit anti-RGD1560888 Antibody - N-terminal region |
| Antibody Type | Primary Antibodies |
| Immunogen | The immunogen for Anti-RGD1560888 antibody is: synthetic peptide directed towards the N-terminal region of Rat RGD1560888 |

Key Feature

| | |
|---------------------|-------------------|
| Clonality | Polyclonal |
| Isotype | IgG |
| Host Species | Rabbit |
| Tested Applications | WB |
| Species Reactivity | Rat Human |
| Concentration | 1 mg/ml |
| Purification | Affinity purified |

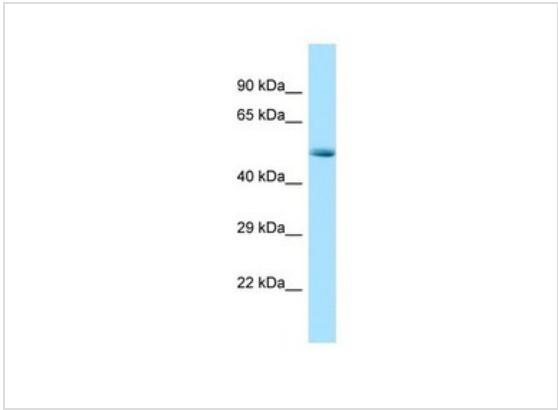
Target Information

| | |
|----------------------|-----------------------------------------------|
| Gene Symbol | RGD1560888 |
| Gene Synonyms | - |
| Gene Summary | The function of this protein remains unknown. |
| Molecular Weight(MW) | 51kDa |
| Sequence | 464 amino acids |

Database Links

| | |
|-------------------|--------------|
| Entrez Gene | 498140 |
| Protein Accession | NP_001102531 |

Application



Western blot
Host: Rabbit
Target Name: RGD1560888
Sample Tissue: Rat Pancreas lysates
Antibody Dilution: 1.0ug/ml

Application Notes **WB:**1:500~1:2000
Notes:Optimal dilutions/concentrations should be determined by the researcher.

Additional Information

| | |
|-----------------------------|-------------------------------------------------------------------------------------------|
| Form | Liquid |
| Storage Instructions | Aliquot and store at -20°C. Avoid repeated freeze / thaw cycles |
| Storage Buffer | phosphate buffered saline , pH 7.4 , 150mM NaCl, 0.02% sodium azide and 50% glycerol. |
| Note | The product is for research use only,not for use in diagnostic or therapeutic procedures. |

OmnimAbs.com

order@Omnimabs.com
506 N. GARFIELD AVE #210 ALHAMBRA, CA 91801
This product is for research use only and is not approved for use in humans or in clinical diagnosis. Primary Antibodies are guaranteed for 1 year from date of receipt