



Catalog: OM105589

Scan to get more validated information



Rabbit anti-SMAD2 polyclonal antibody - N-terminal region

Catalog: OM105589

☐ 100ug

Product profile

Product name	Rabbit anti-SMAD2 polyclonal antibody - N-terminal region
Antibody Type	Primary Antibodies
Immunogen	The immunogen for anti-SMAD2 antibody: synthetic peptide directed towards the N terminal of human SMAD2

Key Feature

Clonality	Polyclonal
Isotype	IgG
Host Species	Rabbit
Tested Applications	WB ,IHC
Species Reactivity	Bovine Dog Guinea Pig Horse Human Mouse Pig Rabbit Rat
Concentration	1 mg/ml
Purification	Affinity purified

Target Information

Gene Symbol	SMAD2
Gene Synonyms	JV18; JV18-1; MADH2; MADR2; MGC22139; MGC34440; hMAD-2; hSMAD2
Gene Full Name	SMAD family member 2
Gene Summary	SMAD2 belongs to the SMAD, a family of proteins similar to the gene products of the Drosophila gene 'mothers against decapentaplegic' (Mad) and the C. elegans gene Sma. SMAD proteins are signal transducers and transcriptional modulators that mediate multiple signaling pathways. SMAD2 mediates the signal of the transforming growth factor (TGF)-beta, and thus regulates multiple cellular processes, such as cell proliferation, apoptosis, and differentiation. SMAD2 is recruited to the TGF-beta receptors through its interaction with the SMAD anchor for receptor activation (SARA) protein. In response to TGF-beta signal, SMAD2 is phosphorylated by the TGF-beta receptors. The phosphorylation induces the dissociation of this

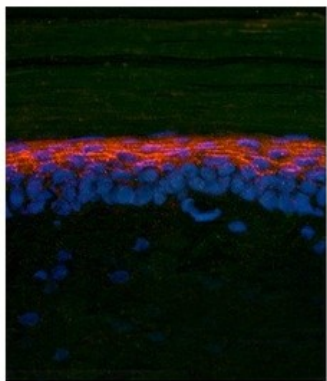
protein with SARA and the association with the family member SMAD4. The association with SMAD4 is important for the translocation of this protein into the nucleus, where it binds to target promoters and forms a transcription repressor complex with other cofactors. This protein can also be phosphorylated by activin type 1 receptor kinase, and mediates the signal from the activin. The protein encoded by this gene belongs to the SMAD, a family of proteins similar to the gene products of the Drosophila gene 'mothers against decapentaplegic' (Mad) and the C. elegans gene Sma. SMAD proteins are signal transducers and transcriptional modulators that mediate multiple signaling pathways. This protein mediates the signal of the transforming growth factor (TGF)-beta, and thus regulates multiple cellular processes, such as cell proliferation, apoptosis, and differentiation. This protein is recruited to the TGF-beta receptors through its interaction with the SMAD anchor for receptor activation (SARA) protein. In response to TGF-beta signal, this protein is phosphorylated by the TGF-beta receptors. The phosphorylation induces the dissociation of this protein with SARA and the association with the family member SMAD4. The association with SMAD4 is important for the translocation of this protein into the nucleus, where it binds to target promoters and forms a transcription repressor complex with other cofactors. This protein can also be phosphorylated by activin type 1 receptor kinase, and mediates the signal from the activin. Alternatively spliced transcript variants encoding the same protein have been observed.

Alternative Names	JV18, JV18-1, MADH2, MADR2, MGC22139, MGC34440, hMAD-2, hSMAD2
Molecular Weight(MW)	52kDa
Sequence	467 amino acids

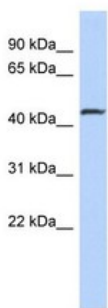
Database Links

Entrez Gene	4087
SwissProt ID	Q15796
Protein Accession	NP_005892

Application



Immunohistochemical
at and mouse brain



Western blot
0.2-1 ug/ml
ELISA Titer: 1:2500
Positive Control: Jurkat cell lysate

Application Notes

WB:1:500~1:2000

IHC:1:50~1:200

Notes:Optimal dilutions/concentrations should be determined by the researcher.

Additional Information

Form	Liquid
Storage Instructions	Aliquot and store at -20°C. Avoid repeated freeze / thaw cycles
Storage Buffer	phosphate buffered saline , pH 7.4, 150mM NaCl, 0.02% sodium azide and 50% glycerol.
Note	The product is for research use only,not for use in diagnostic or therapeutic procedures.

OmnimAbs.com

order@Omnimabs.com

506 N. GARFIELD AVE #210 ALHAMBRA, CA 91801

This product is for research use only and is not approved for use in humans or in clinical diagnosis. Primary Antibodies are guaranteed for 1 year from date of receipt