



Catalog: OM105590

Scan to get more validated information



Rabbit anti-SMAD4 polyclonal antibody - middle region

Catalog: OM105590

☐ 100ug

Product profile

Product name	Rabbit anti-SMAD4 polyclonal antibody - middle region
Antibody Type	Primary Antibodies
Immunogen	The immunogen for anti-SMAD4 antibody: synthetic peptide directed towards the middle region of human SMAD4

Key Feature

Clonality	Polyclonal
Isotype	IgG
Host Species	Rabbit
Tested Applications	WB
Species Reactivity	Bovine Goat Guinea Pig Horse Human Mouse Pig Rat
Concentration	1 mg/ml
Purification	Protein A

Target Information

Gene Symbol	SMAD4
Gene Synonyms	JIP; DPC4; MADH4; MYHRS
Gene Full Name	SMAD family member 4
Gene Summary	SMAD4 is one of the Smad family members, which are essential intracellular signalling components of the transforming growth factor-beta (TGF-beta) superfamily. Smad2 and Smad3 are structurally highly similar and mediate TGF-beta signals. Smad4 is distantly related to Smads 2 and 3, and forms a heteromeric complex with Smad2 after TGF-beta or activin stimulation. TGF-beta induces heteromeric complexes of Smads 2, 3 and 4, and their concomitant translocation to the nucleus, which is required for efficient TGF-beta signal transduction
Alternative Names	JIP, DPC4, MADH4, MYHRS

Molecular Weight(MW)	60kDa
Sequence	552 amino acids

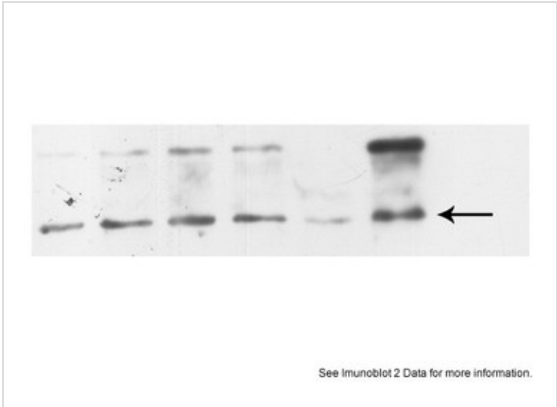
Database Links

Entrez Gene	4089
SwissProt ID	Q13485
Protein Accession	NP_005350

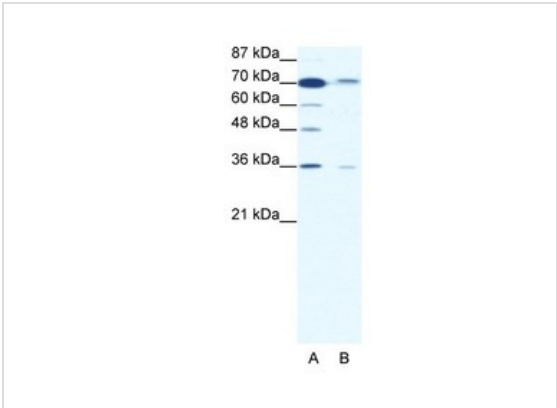
Application



Western blot
 SMAD4 antibody - middle region validated by WB using U2OS nuclear extracts



Western blot
 Sample Type: Human nuclear cell extracts (30ug)
 Primary Dilution: 1:1000
 Secondary Antibody: anti-Rabbit HRP
 Secondary Dilution: 1:20000
 Image Submitted By: Katarina Luciakova
 Cancer Research Institute See Customer Feedback tab for detailed information.



Western blot
 1.25ug/ml
 ELISA Titer: 1:312500
 Positive Control: HepG2 cell lysate

Application Notes	WB: 1:500~1:2000
	Notes: Optimal dilutions/concentrations should be determined by the researcher.

Additional Information

Form	Liquid
Storage Instructions	Aliquot and store at -20°C. Avoid repeated freeze / thaw cycles
Storage Buffer	phosphate buffered saline , pH 7.4, 150mM NaCl, 0.02% sodium azide and 50% glycerol.
Note	The product is for research use only,not for use in diagnostic or therapeutic procedures.

OmnimAbs.com

order@Omnimabs.com

506 N. GARFIELD AVE #210 ALHAMBRA, CA 91801

This product is for research use only and is not approved for use in humans or in clinical diagnosis. Primary Antibodies are guaranteed for 1 year from date of receipt
