



Catalog: OM105594

Scan to get more validated information



Rabbit anti-SMAD5 polyclonal antibody - middle region

Catalog: OM105594

☐ 100ug

Product profile

Product name	Rabbit anti-SMAD5 polyclonal antibody - middle region
Antibody Type	Primary Antibodies
Immunogen	The immunogen for anti-SMAD5 antibody: synthetic peptide directed towards the middle region of human SMAD5

Key Feature

Clonality	Polyclonal
Isotype	IgG
Host Species	Rabbit
Tested Applications	WB
Species Reactivity	Bovine Dog Horse Human Mouse Rat Zebra Fish
Concentration	1 mg/ml
Purification	Affinity purified

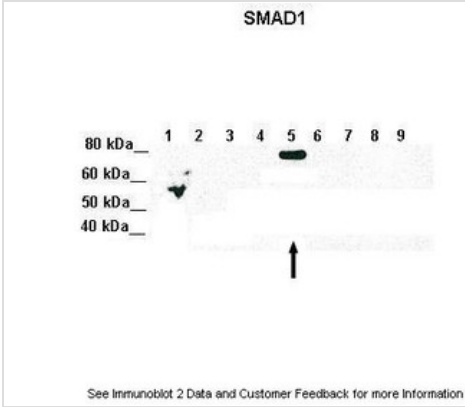
Target Information

Gene Symbol	SMAD5
Gene Synonyms	DWFC; JV5-1; MADH5
Gene Full Name	SMAD family member 5
Gene Summary	SMAD5 undergoes copy number gain and increased expression, rather than loss of expression, and therefore does not act as a tumor-suppressor gene in hepatocellular carcinoma. Up-regulated Smad5 mediates apoptosis of gastric epithelial cells induced by Helicobacter pylori infection.
Alternative Names	DWFC, JV5-1, MADH5
Molecular Weight(MW)	51kDa
Sequence	465 amino acids

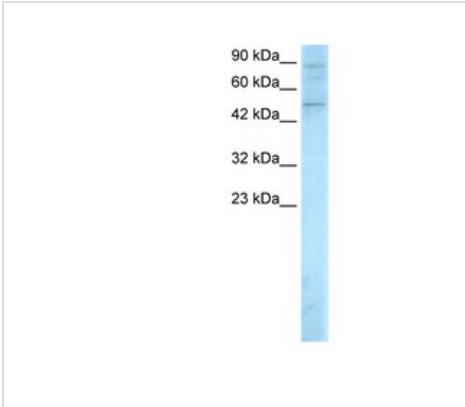
Database Links

Entrez Gene	4090
SwissProt ID	Q99717
Protein Accession	NP_005894

Application



Immunoblot
Lane 1: 5ug of transfected 293T lysate (SMAD1)
Lane 1: 5ug of transfected 293T lysate (SMAD2)
Lane 1: 5ug of transfected 293T lysate (SMAD3)
Lane 1: 5ug of transfected 293T lysate (SMAD4)
Lane 1: 5ug of transfected 293T lysate (SMAD5)
Lane 1: 5ug of transfected 293T lysate (SMAD6)
Lane 1: 5ug of transfected 293T lysate (SMAD7)
Lane 1: 5ug of transfected 293T lysate (SMAD8)
Lane 1: 5ug of transfected 293T lysate (GFP)
Primary Antibody Dilution:
1:1000
Secondary Antibody:
Goat anti-Rabbit IgG HRP Conjugated
Secondary Antibody Dilution:
1:10,000
Gene Name:
SMAD5
Submitted by:
Amanda Urick, Medical College of Wisconsin



Western blot
0.2-1 ug/ml
ELISA Titer: 1:62500
Positive Control: HepG2 cell lysate

Application Notes	WB:1:500~1:2000 Notes:Optimal dilutions/concentrations should be determined by the researcher.
-------------------	---

Additional Information

Form	Liquid
Storage Instructions	Aliquot and store at -20°C. Avoid repeated freeze / thaw cycles
Storage Buffer	phosphate buffered saline , pH 7.4, 150mM NaCl, 0.02% sodium azide and 50% glycerol.
Note	The product is for research use only,not for use in diagnostic or therapeutic procedures.

OmnimAbs.com

order@Omnimabs.com
506 N. GARFIELD AVE #210 ALHAMBRA, CA 91801
This product is for research use only and is not approved for use in humans or in clinical diagnosis. Primary Antibodies are guaranteed for 1 year from date of receipt
