



Catalog: OM105599

Scan to get more validated information



Rabbit anti-SMAD7 polyclonal antibody - N-terminal region

Catalog: OM105599

☐ 100ug

Product profile

Product name	Rabbit anti-SMAD7 polyclonal antibody - N-terminal region
Antibody Type	Primary Antibodies
Immunogen	The immunogen for anti-SMAD7 antibody: synthetic peptide directed towards the N terminal of human SMAD7

Key Feature

Clonality	Polyclonal
Isotype	IgG
Host Species	Rabbit
Tested Applications	WB
Species Reactivity	Bovine Dog Human Mouse Pig Rat
Concentration	1 mg/ml
Purification	Affinity purified

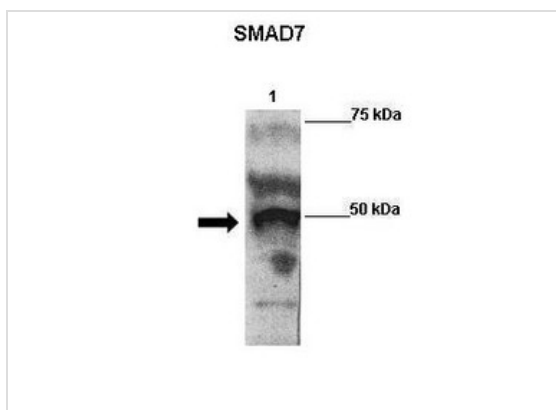
Target Information

Gene Symbol	SMAD7
Gene Synonyms	CRCS3; MADH7; MADH8
Gene Full Name	SMAD family member 7
Gene Summary	Smad7 acts to functionally inactivate RB and de-repress E2F without blocking the activation of TbetaRI and the nuclear translocation of Smad2/3, allowing TGF-beta1 to exert effects in a cancer cell that is resistant to TGF-beta1-mediated growth inhibition.
Alternative Names	CRCS3, MADH7, MADH8
Molecular Weight(MW)	46kDa
Sequence	426 amino acids

Database Links

Entrez Gene	4092
SwissProt ID	O15105
Protein Accession	NP_005895

Application



Western blot

Positive Control: Lane 1: 2ug Flag-SMAD7 transfected 293 extracts

Primary Antibody Dilution : 1:500

Secondary Antibody : Goat anti-rabbit-HRP

Secondary Antibody Dilution : 1:5000

Submitted by: Anonymous

Application Notes

WB:1:500~1:2000

Notes: Optimal dilutions/concentrations should be determined by the researcher.

Additional Information

Form	Liquid
Storage Instructions	Aliquot and store at -20°C. Avoid repeated freeze / thaw cycles
Storage Buffer	phosphate buffered saline , pH 7.4, 150mM NaCl, 0.02% sodium azide and 50% glycerol.
Note	The product is for research use only, not for use in diagnostic or therapeutic procedures.

OmnimAbs.com

order@Omnimabs.com

506 N. GARFIELD AVE #210 ALHAMBRA, CA 91801

This product is for research use only and is not approved for use in humans or in clinical diagnosis. Primary Antibodies are guaranteed for 1 year from date of receipt