



Catalog: OM105602

Scan to get more validated information



Rabbit anti-SMAD7 polyclonal antibody - N-terminal region

Catalog: OM105602

☐ 100ug

Product profile

Product name	Rabbit anti-SMAD7 polyclonal antibody - N-terminal region
Antibody Type	Primary Antibodies
Immunogen	The immunogen for anti-SMAD7 antibody: synthetic peptide directed towards the N terminal of human SMAD7

Key Feature

Clonality	Polyclonal
Isotype	IgG
Host Species	Rabbit
Tested Applications	WB
Species Reactivity	Bovine Dog Human Mouse Pig Rat
Concentration	1 mg/ml
Purification	Protein A

Target Information

Gene Symbol	SMAD7
Gene Synonyms	FLJ16482; MADH7; MADH8; CRCS3
Gene Full Name	SMAD family member 7
Gene Summary	Smad7 acts to functionally inactivate RB and de-repress E2F without blocking the activation of TbetaRI and the nuclear translocation of Smad2/3, allowing TGF-beta1 to exert effects in a cancer cell that is resistant to TGF-beta1-mediated growth inhibition.
Alternative Names	FLJ16482, MADH7, MADH8, CRCS3
Molecular Weight(MW)	46kDa
Sequence	426 amino acids

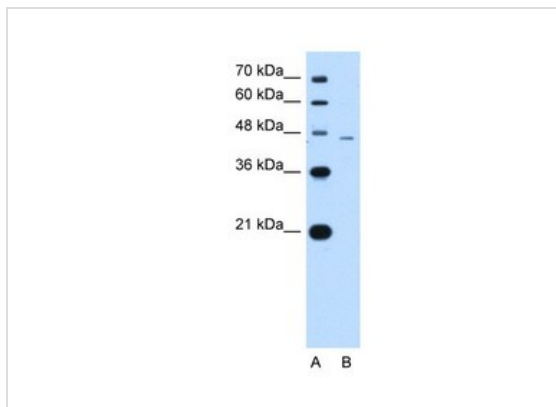
Sequence

123 amino acids

Database Links

Entrez Gene	4092
SwissProt ID	O15105
Protein Accession	NP_005895

Application



Western blot
1.0ug/ml
Positive Control: Human Lung

Application Notes	WB: 1:500~1:2000 Notes: Optimal dilutions/concentrations should be determined by the researcher.
-------------------	---

Additional Information

Form	Liquid
Storage Instructions	Aliquot and store at -20°C. Avoid repeated freeze / thaw cycles
Storage Buffer	phosphate buffered saline , pH 7.4, 150mM NaCl, 0.02% sodium azide and 50% glycerol.
Note	The product is for research use only,not for use in diagnostic or therapeutic procedures.

OmnimAbs.com

order@Omnimabs.com

506 N. GARFIELD AVE #210 ALHAMBRA, CA 91801

This product is for research use only and is not approved for use in humans or in clinical diagnosis. Primary Antibodies are guaranteed for 1 year from date of receipt