



Catalog: OM105104

Scan to get more validated information



# Rabbit anti-SMARCA5 polyclonal antibody - N-terminal region

Catalog: OM105104

☐ 100ug

## Product profile

Product name	Rabbit anti-SMARCA5 polyclonal antibody - N-terminal region
Antibody Type	Primary Antibodies
Immunogen	The immunogen for anti-SMARCA5 antibody: synthetic peptide directed towards the N terminal of human SMARCA5

## Key Feature

Clonality	Polyclonal
Isotype	IgG
Host Species	Rabbit
Tested Applications	WB
Species Reactivity	Bovine Dog Guinea Pig Horse Human Pig Rabbit Rat
Concentration	1 mg/ml
Purification	Affinity purified

## Target Information

Gene Symbol	SMARCA5
Gene Synonyms	SMARCA5
Gene Full Name	SWI/SNF related, matrix associated, actin dependent regulator of chromatin, subfamily a, member 5
Gene Summary	SMARCA5 is a member of the SWI/SNF family of proteins. Members of this family have helicase and ATPase activities and are thought to regulate transcription of certain genes by altering the chromatin structure around those genes. SMARCA5 is a component of the chromatin remodeling and spacing factor RSF, a facilitator of the transcription of class II genes by RNA polymerase II. The protein encoded by this gene is a member of the SWI/SNF family of proteins. Members of this family have helicase and ATPase activities and are thought to regulate transcription of certain genes by altering the chromatin structure around those genes. The protein encoded by this gene is a component of the chromatin remodeling and spacing factor

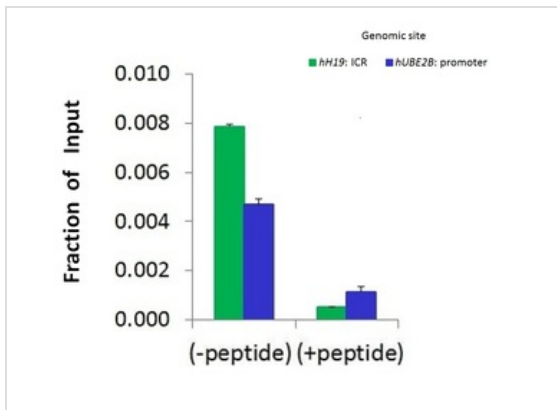
tor RSF, a facilitator of the transcription of class II genes by RNA polymerase II. The encoded protein is similar in sequence to the *Drosophila* ISWI chromatin remodeling protein. Publication Note: This RefSeq record includes a subset of the publications that are available for this gene. Please see the Entrez Gene record to access additional publications.

<b>Alternative Names</b>	ISWI, SNF2H, WCRF135, hISWI, hSNF2H
<b>Molecular Weight(MW)</b>	122kDa
<b>Sequence</b>	1052 amino acids

## Database Links

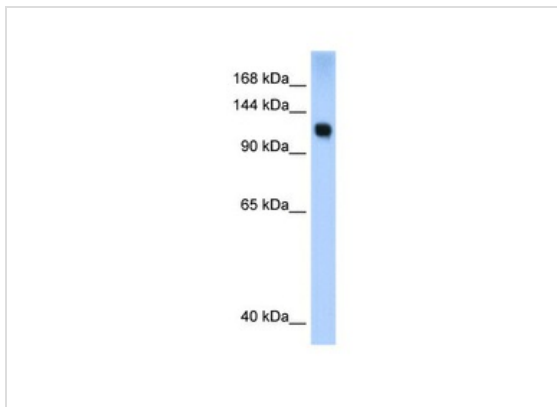
<b>Entrez Gene</b>	8467
<b>SwissProt ID</b>	O60264
<b>Protein Accession</b>	NP_003592

## Application



## Application

Chromatin Immunoprecipitation (ChIP) Using SMARCA5 antibody - N-terminal region ( ) and HCT116 Cells



## Application

**WB Suggested Anti-SMARCA5 Antibody Titration: 0.2-1 ug/ml**

**ELISA Titer: 1:312500**

**Positive Control:** Transfected 293T

**Application Notes** **WB:**1:500~1:2000

**Notes:**Optimal dilutions/concentrations should be determined by the researcher.

### Additional Information

<b>Form</b>	Liquid
<b>Storage Instructions</b>	Aliquot and store at -20°C. Avoid repeated freeze / thaw cycles

**Storage Buffer**                      phosphate buffered saline , pH 7.4, 150mM NaCl, 0.02% sodium azide and 50% glycerol.

**Note**                                      The product is for research use only,not for use in diagnostic or therapeutic procedures.

# OmnimAbs.com

---

order@Omnimabs.com

506 N. GARFIELD AVE #210 ALHAMBRA, CA 91801

This product is for research use only and is not approved for use in humans or in clinical diagnosis. Primary Antibodies are guaranteed for 1 year from date of receipt

---

