



Catalog: OM105177

Scan to get more validated information



Rabbit anti-STAT3 polyclonal antibody - middle region

Catalog: OM105177

☐ 100ug

Product profile

Product name	Rabbit anti-STAT3 polyclonal antibody - middle region
Antibody Type	Primary Antibodies
Immunogen	The immunogen for anti-STAT3 antibody: synthetic peptide directed towards the middle region of human STAT3

Key Feature

Clonality	Polyclonal
Isotype	IgG
Host Species	Rabbit
Tested Applications	WB
Species Reactivity	Bovine Dog Guinea Pig Horse Human Mouse Pig Rabbit Rat Sheep
Concentration	1 mg/ml
Purification	Affinity purified

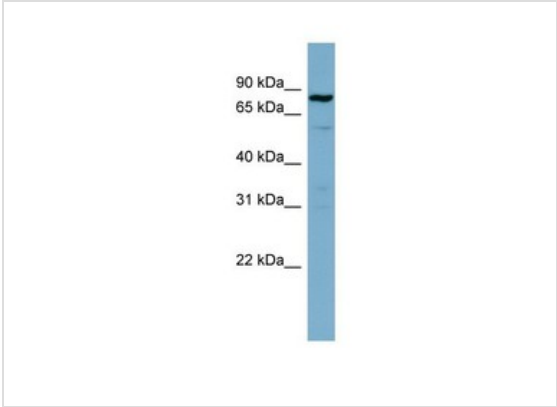
Target Information

Gene Symbol	STAT3
Gene Synonyms	APRF; FLJ20882; MGC16063; HIES
Gene Full Name	Signal transducer and activator of transcription 3 (acute-phase response factor)
Gene Summary	STAT3 is a member of the STAT protein family. In response to cytokines and growth factors, STAT family members are phosphorylated by the receptor associated kinases, and then form homo- or heterodimers that translocate to the cell nucleus where they act as
Alternative Names	APRF, FLJ20882, MGC16063, HIES
Molecular Weight(MW)	88kDa
Sequence	770 amino acids

Database Links

Entrez Gene	6774
SwissProt ID	P40763
Protein Accession	NP_644805

Application



Western blot
0.2-1 ug/ml
ELISA Titer: 1:62500
Positive Control: THP-1 cell lysate

Application Notes	WB: 1:500~1:2000 Notes: Optimal dilutions/concentrations should be determined by the researcher.
-------------------	---

Additional Information

Form	Liquid
Storage Instructions	Aliquot and store at -20°C. Avoid repeated freeze / thaw cycles
Storage Buffer	phosphate buffered saline , pH 7.4, 150mM NaCl, 0.02% sodium azide and 50% glycerol.
Note	The product is for research use only,not for use in diagnostic or therapeutic procedures.

OmnimAbs.com

order@Omnimabs.com
506 N. GARFIELD AVE #210 ALHAMBRA, CA 91801
This product is for research use only and is not approved for use in humans or in clinical diagnosis. Primary Antibodies are guaranteed for 1 year from date of receipt

