



**Catalog: OM126746**

Scan to get more validated information



# Rabbit anti-SUPT3H polyclonal antibody

Catalog: OM126746

☐ 100ug

## Product profile

Product name	Rabbit anti-SUPT3H polyclonal antibody
Antibody Type	Primary Antibodies
Immunogen	The antiserum was produced against synthesized peptide derived from human SUPT3H.

## Key Feature

Clonality	Polyclonal
Host Species	Rabbit
Tested Applications	WB ,ELISA
Species Reactivity	Human
Concentration	1 mg/ml
Purification	Affinity purified

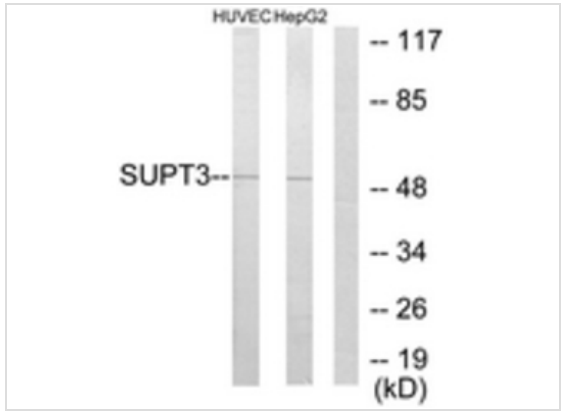
## Target Information

Gene Symbol	SUPT3H
Gene Synonyms	Transcription initiation protein SPT3 homolog; SPT3-like protein; SUPT3H; SPT3

## Database Links

Entrez Gene	8464
Unigene	368325
OMIM	602947
SwissProt ID	O75486

## Application



**Western blot**  
Western blot analysis of extracts from HUVEC/HepG2 cells, using SUPT3H Antibody. The lane on the right is treated with the synthesized peptide

**Application Notes**  
WB:1:500~1:1000  
ELISA:1:20000

Additional Information

Form	Liquid
Storage Instructions	store at -20°C. Avoid repeated freeze / thaw cycles
Storage Buffer	Rabbit IgG in phosphate buffered saline (without Mg2+ and Ca2+), pH 7.4, 150mM NaCl, 0.02% sodium azide and 50% glycerol.
Note	The product is for research use only,not for use in diagnostic or therapeutic procedures.

OmnimAbs.com

order@Omnimabs.com  
506 N. GARFIELD AVE #210 ALHAMBRA, CA 91801  
This product is for research use only and is not approved for use in humans or in clinical diagnosis. Primary Antibodies are guaranteed for 1 year from date of receipt