



Catalog: OM105116

Scan to get more validated information



# Rabbit anti-SUPT3H polyclonal antibody - N-terminal region

Catalog: OM105116

☐ 100ug

## Product profile

Product name	Rabbit anti-SUPT3H polyclonal antibody - N-terminal region
Antibody Type	Primary Antibodies
Immunogen	The immunogen for anti-SUPT3H antibody: synthetic peptide directed towards the N terminal of human SUPT3H

## Key Feature

Clonality	Polyclonal
Isotype	IgG
Host Species	Rabbit
Tested Applications	WB ,IHC
Species Reactivity	Bovine Dog Goat Guinea Pig Horse Human Mouse Pig Rabbit Rat
Concentration	1 mg/ml
Purification	Protein A

## Target Information

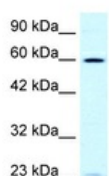
Gene Symbol	SUPT3H
Gene Synonyms	SUPT3H
Gene Full Name	Suppressor of Ty 3 homolog (S. cerevisiae)
Gene Summary	SUPT3H is a component of the multiprotein SPT-ADA-GCN5 acetyltransferase (SAGA) complex that integrates proteins with transcription coactivator/adaptor functions (ADAs and GCN5), histone acetyltransferase activity (GCN5), and core promoter-selective functions (SPTs) involving interactions with the TATA-binding protein (TBP).
Alternative Names	SPT3, SPT3L
Molecular Weight(MW)	36kDa

Sequence 317 amino acids

## Database Links

Entrez Gene 8464  
SwissProt ID O75486  
Protein Accession NP\_003590

## Application



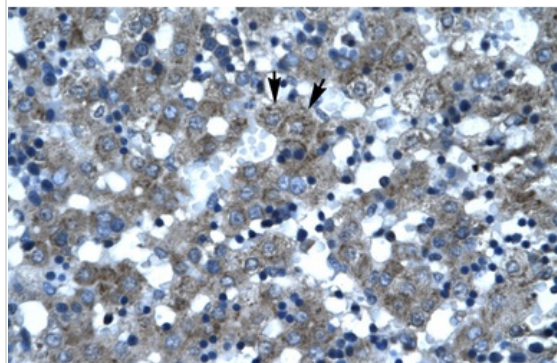
### Application

**WB Suggested Anti-SUPT3H Antibody Titration:** 0.4ug/ml

**ELISA Titer:** 1:1562500

**Positive Control:** HepG2 cell lysate

SUPT3H is supported by BioGPS gene expression data to be expressed in HepG2



### Application

Rabbit Anti-SUPT3H Antibody

Catalog Number: ARP30038

Paraffin Embedded Tissue: Human Liver

Cellular Data: Hepatocytes

Antibody Concentration: 4.0-8.0 ug/ml

Magnification: 400X

### Application Notes

**WB:**1:500~1:2000

**IHC:**1:50~1:200

**Notes:**Optimal dilutions/concentrations should be determined by the researcher.

## Additional Information

**Form** Liquid

**Storage Instructions** Aliquot and store at -20°C. Avoid repeated freeze / thaw cycles

**Storage Buffer** phosphate buffered saline , pH 7.4, 150mM NaCl, 0.02% sodium azide and 50% glycerol.

**Note** The product is for research use only,not for use in diagnostic or therapeutic procedures.

order@Omnimabs.com

506 N. GARFIELD AVE #210 ALHAMBRA, CA 91801

This product is for research use only and is not approved for use in humans or in clinical diagnosis. Primary Antibodies are guaranteed for 1 year from date of receipt

