



Catalog: OM105134

Scan to get more validated information



Rabbit anti-Scrt1 Antibody - N-terminal region

Catalog: OM105134

☐ 100ug

Product profile

Product name	Rabbit anti-Scrt1 Antibody - N-terminal region
Antibody Type	Primary Antibodies
Immunogen	The immunogen for Anti-Scrt1 antibody is: synthetic peptide directed towards the N-terminal region of R at Scrt1

Key Feature

Clonality	Polyclonal
Isotype	IgG
Host Species	Rabbit
Tested Applications	WB
Species Reactivity	Rat Human
Concentration	1 mg/ml
Purification	Affinity purified

Target Information

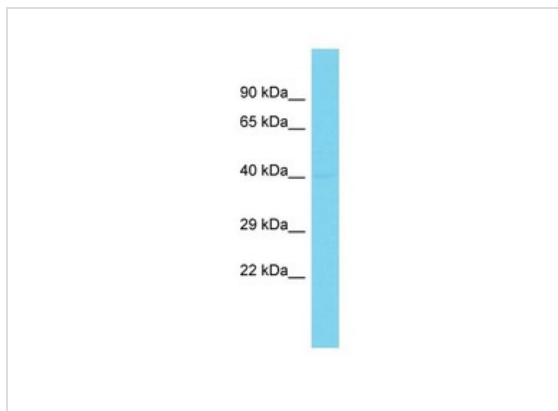
Gene Symbol	Scrt1
Gene Synonyms	-
Gene Full Name	scratch homolog 1, zinc finger protein (Drosophila)
Gene Summary	The function of this protein remains unknown.
Molecular Weight(MW)	38kDa
Sequence	348 amino acids

Database Links

Entrez Gene	366951
-------------	--------

SwissProt ID	D4A919
Protein Accession	NP_001124042

Application



Western blot
Host: Rabbit
Target Name: Scrt1
Sample Tissue: Rat Stomach lysates
Antibody Dilution: 1.0ug/ml

Application Notes	WB: 1:500~1:2000 Notes: Optimal dilutions/concentrations should be determined by the researcher.
--------------------------	---

Additional Information

Form	Liquid
Storage Instructions	Aliquot and store at -20°C. Avoid repeated freeze / thaw cycles
Storage Buffer	phosphate buffered saline , pH 7.4, 150mM NaCl, 0.02% sodium azide and 50% glycerol.
Note	The product is for research use only,not for use in diagnostic or therapeutic procedures.

OmnimAbs.com

order@Omnimabs.com

506 N. GARFIELD AVE #210 ALHAMBRA, CA 91801

This product is for research use only and is not approved for use in humans or in clinical diagnosis. Primary Antibodies are guaranteed for 1 year from date of receipt