



Catalog: OM126790

Scan to get more validated information



# Rabbit anti-TAF15 polyclonal antibody

Catalog: OM126790

☐ 100ug

## Product profile

Product name	Rabbit anti-TAF15 polyclonal antibody
Antibody Type	Primary Antibodies
Immunogen	The antiserum was produced against synthesized peptide derived from human TAF15.

## Key Feature

Clonality	Polyclonal
Host Species	Rabbit
Tested Applications	WB ,IHC ,ELISA
Species Reactivity	Human Mouse
Concentration	1 mg/ml
Purification	Affinity purified

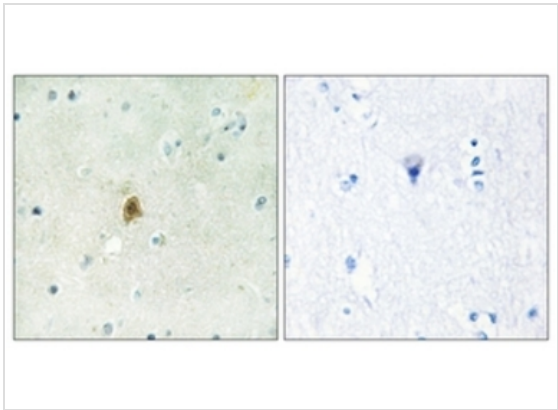
## Target Information

Gene Symbol	TAF15
Gene Synonyms	RNA-binding protein 56; TAFII68; TAF(II)68

## Database Links

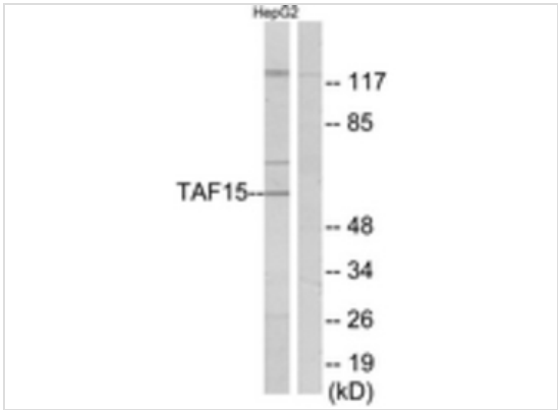
Entrez Gene	8148
Unigene	402752
OMIM	601574
SwissProt ID	Q92804

## Application



#### Immunohistochemical

Immunohistochemistry analysis of paraffin-embedded human brain tissue, using TAF15 Antibody. The picture on the right is treated with the synthesized peptide.



#### Western blot

Western blot analysis of extracts from HepG2 cells, using TAF15 Antibody. The lane on the right is treated with the synthesized peptide

#### Application Notes

**WB:**1:500~1:1000

**IHC:**1:50~1:100

**ELISA:**1:1000

### Additional Information

<b>Form</b>	Liquid
<b>Storage Instructions</b>	store at -20°C. Avoid repeated freeze / thaw cycles
<b>Storage Buffer</b>	Rabbit IgG in phosphate buffered saline (without Mg <sup>2+</sup> and Ca <sup>2+</sup> ), pH 7.4, 150mM NaCl, 0.02% sodium azide and 50% glycerol.
<b>Note</b>	The product is for research use only, not for use in diagnostic or therapeutic procedures.

# OmnimAbs.com

order@Omnimabs.com  
 506 N. GARFIELD AVE #210 ALHAMBRA, CA 91801  
 This product is for research use only and is not approved for use in humans or in clinical diagnosis. Primary Antibodies are guaranteed for 1 year from date of receipt