



Catalog: OM105580

Scan to get more validated information



# Rabbit anti-TBX10 polyclonal antibody - N-terminal region

Catalog: OM105580

☐ 100ug

## Product profile

Product name	Rabbit anti-TBX10 polyclonal antibody - N-terminal region
Antibody Type	Primary Antibodies
Immunogen	The immunogen for anti-TBX10 antibody: synthetic peptide directed towards the N terminal of human TBX10

## Key Feature

Clonality	Polyclonal
Isotype	IgG
Host Species	Rabbit
Tested Applications	WB
Species Reactivity	Bovine Horse Human Mouse Rat
Concentration	1 mg/ml
Purification	Affinity purified

## Target Information

Gene Symbol	TBX10
Gene Synonyms	TBX7; TBX13
Gene Full Name	T-box 10
Gene Summary	TBX10, a member of the Tbx1-subfamily of conserved developmental genes, is located at human chromosome 11q13 and proximal mouse chromosome 19.
Alternative Names	TBX7, TBX13
Molecular Weight(MW)	42kDa
Sequence	385 amino acids

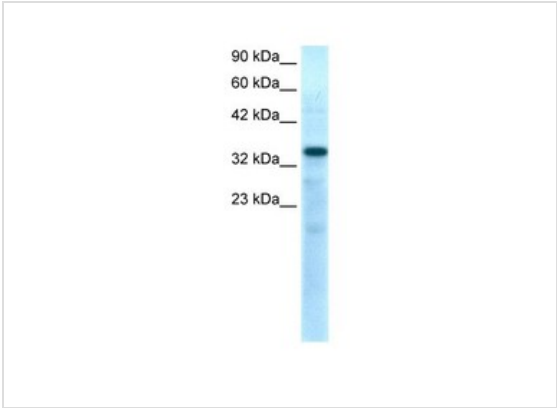
## Database Links

---

Entrez Gene	347853
SwissProt ID	O75333
Protein Accession	NP_005986

## Application

---



**Western blot**  
0.2-1 ug/ml  
Positive Control: Human Muscle

Application Notes	WB:1:500~1:2000 <b>Notes:</b> Optimal dilutions/concentrations should be determined by the researcher.
-------------------	---

## Additional Information

---

Form	Liquid
Storage Instructions	Aliquot and store at -20°C. Avoid repeated freeze / thaw cycles
Storage Buffer	phosphate buffered saline , pH 7.4, 150mM NaCl, 0.02% sodium azide and 50% glycerol.
Note	The product is for research use only,not for use in diagnostic or therapeutic procedures.

# OmnimAbs.com

---

order@Omnimabs.com  
506 N. GARFIELD AVE #210 ALHAMBRA, CA 91801  
This product is for research use only and is not approved for use in humans or in clinical diagnosis. Primary Antibodies are guaranteed for 1 year from date of receipt

