



Catalog: OM105121

Scan to get more validated information



# Rabbit anti-TCF7L1 polyclonal antibody - N-terminal region

Catalog: OM105121

☐ 100ug

## Product profile

Product name	Rabbit anti-TCF7L1 polyclonal antibody - N-terminal region
Antibody Type	Primary Antibodies
Immunogen	The immunogen for anti-TCF7L1 antibody: synthetic peptide directed towards the N terminal of human TCF7L1

## Key Feature

Clonality	Polyclonal
Isotype	IgG
Host Species	Rabbit
Tested Applications	WB ,IHC
Species Reactivity	Guinea Pig Human Mouse Rabbit
Concentration	1 mg/ml
Purification	Affinity purified

## Target Information

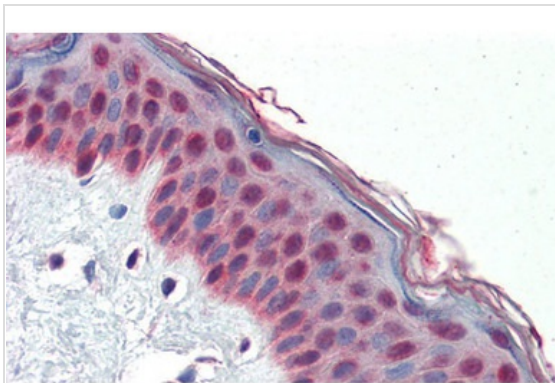
Gene Symbol	TCF7L1
Gene Synonyms	TCF7L1
Gene Full Name	Transcription factor 7-like 1 (T-cell specific, HMG-box)
Gene Summary	TCF7L1 participates in the Wnt signaling pathway. It binds to DNA and acts as a repressor in the absence of CTNNB1, and as an activator in its presence. It is necessary for the terminal differentiation of epidermal cells, the formation of keratohyalin granules and the development of the barrier function of the epidermis. TCF7L1 down-regulates NQO1, leading to increased mitomycin c resistance.
Alternative Names	TCF-3, TCF3
Molecular Weight(MW)	63kDa

Sequence 588 amino acids

## Database Links

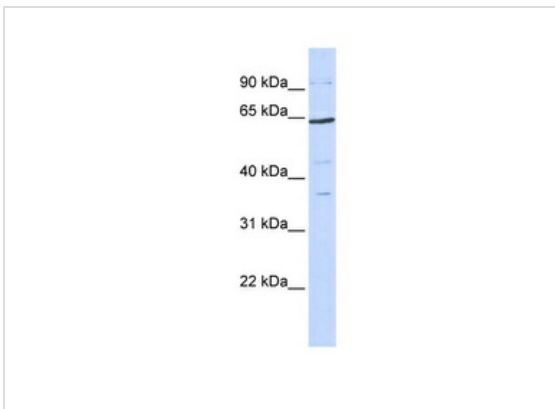
Entrez Gene 83439  
SwissProt ID Q9HCS4  
Protein Accession NP\_112573

## Application



### Application

Immunohistochemistry with Human Skin lysate tissue at an antibody concentration of 5.0ug/ml using anti-TCF7L1 antibody ()



### Application

**WB Suggested Anti-TCF7L1 Antibody Titration:** 0.2-1 ug/ml

**ELISA Titer:** 1:312500

**Positive Control:** 293T cell lysate

**Application Notes** **WB:**1:500~1:2000

**IHC:**1:50~1:200

**Notes:**Optimal dilutions/concentrations should be determined by the researcher.

## Additional Information

**Form** Liquid  
**Storage Instructions** Aliquot and store at -20°C. Avoid repeated freeze / thaw cycles  
**Storage Buffer** phosphate buffered saline , pH 7.4, 150mM NaCl, 0.02% sodium azide and 50% glycerol.  
**Note** The product is for research use only,not for use in diagnostic or therapeutic procedures.

order@Omnimabs.com

506 N. GARFIELD AVE #210 ALHAMBRA, CA 91801

This product is for research use only and is not approved for use in humans or in clinical diagnosis. Primary Antibodies are guaranteed for 1 year from date of receipt

