



Catalog: OM126863

Scan to get more validated information



Rabbit anti-TEAD2 polyclonal antibody

Catalog: OM126863

☐ 100ug

Product profile

Product name	Rabbit anti-TEAD2 polyclonal antibody
Antibody Type	Primary Antibodies
Immunogen	The antiserum was produced against synthesized peptide derived from human TEAD2.

Key Feature

Clonality	Polyclonal
Host Species	Rabbit
Tested Applications	IHC ,IF ,ELISA
Species Reactivity	Human Mouse
Concentration	1 mg/ml
Purification	Affinity purified

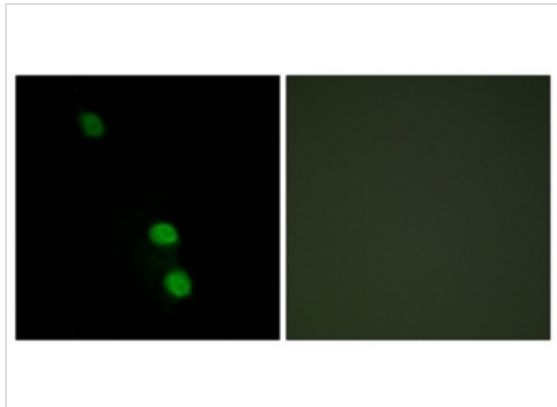
Target Information

Gene Symbol	TEAD2
Gene Synonyms	Transcriptional enhancer factor TEF-4; TEA domain family member 2; TEAD-2; TEF4

Database Links

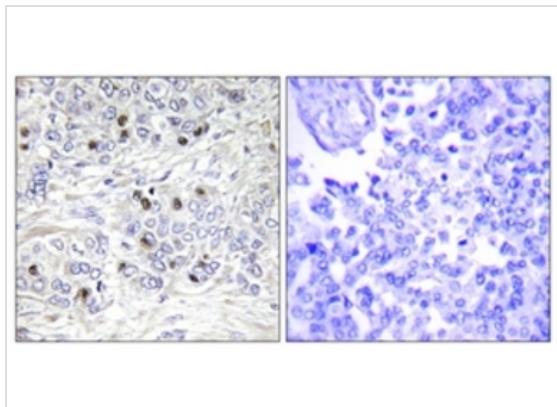
Entrez Gene	8463
Unigene	515534
OMIM	601729
SwissProt ID	Q15562

Application



Immunofluorescence

Immunofluorescence analysis of HepG2 cells, using TEAD2 Antibody. The picture on the right is treated with the synthesized peptide.



Immunohistochemical

Immunohistochemistry analysis of paraffin-embedded human breast carcinoma tissue, using TEAD2 Antibody. The picture on the right is treated with the synthesized peptide

Application Notes

IHC:1:50~1:100

IF:1:100~1:500

ELISA:1:5000

Additional Information

Form	Liquid
Storage Instructions	store at -20°C. Avoid repeated freeze / thaw cycles
Storage Buffer	Rabbit IgG in phosphate buffered saline (without Mg ²⁺ and Ca ²⁺), pH 7.4, 150mM NaCl, 0.02% sodium azide and 50% glycerol.
Note	The product is for research use only, not for use in diagnostic or therapeutic procedures.

OmnimAbs.com

order@Omnimabs.com

506 N. GARFIELD AVE #210 ALHAMBRA, CA 91801

This product is for research use only and is not approved for use in humans or in clinical diagnosis. Primary Antibodies are guaranteed for 1 year from date of receipt