



Catalog: OM105146

Scan to get more validated information



Rabbit anti-TERF2 polyclonal antibody - C-terminal region

Catalog: OM105146

☐ 100ug

Product profile

| | |
|---------------|---|
| Product name | Rabbit anti-TERF2 polyclonal antibody - C-terminal region |
| Antibody Type | Primary Antibodies |
| Immunogen | The immunogen for anti-TERF2 antibody: synthetic peptide directed towards the C terminal of human TERF2 |

Key Feature

| | |
|---------------------|--|
| Clonality | Polyclonal |
| Isotype | IgG |
| Host Species | Rabbit |
| Tested Applications | WB |
| Species Reactivity | Bovine Dog Guinea Pig Horse Human Mouse Pig Rabbit Rat |
| Concentration | 1 mg/ml |
| Purification | Protein A |

Target Information

| | |
|----------------|---|
| Gene Symbol | TERF2 |
| Gene Synonyms | TRBF2; TRF2 |
| Gene Full Name | Telomeric repeat binding factor 2 |
| Gene Summary | TERF2 is a telomere specific protein, TERF2, which is a component of the telomere nucleoprotein complex. This protein is present at telomeres in metaphase of the cell cycle, is a second negative regulator of telomere length and plays a key role in the protective activity of telomeres. While having similar telomere binding activity and domain organization, TERF2 differs from TERF1 in that its N terminus is basic rather than an acidic. This gene encodes a telomere specific protein, TERF2, which is a component of the telomere nucleoprotein complex. This protein is present at telomeres in metaphase of the cell cycle, is a second negative regulator of telomere length and plays a key role in the protective activity of telomeres. While having |

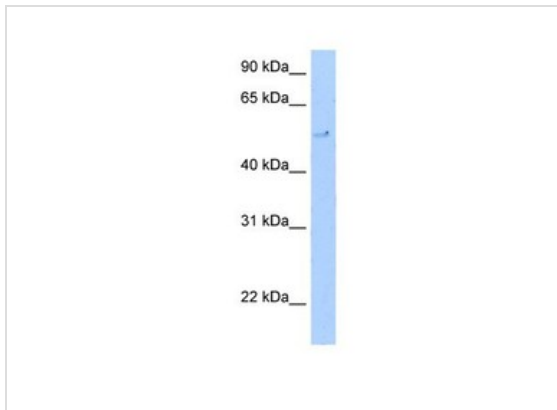
g similar telomere binding activity and domain organization, TERF2 differs from TERF1 in that its N terminus is basic rather than acidic. Publication Note: This RefSeq record includes a subset of the publications that are available for this gene. Please see the Entrez Gene record to access additional publications.

| | |
|----------------------|-----------------|
| Alternative Names | TRBF2, TRF2 |
| Molecular Weight(MW) | 55kDa |
| Sequence | 500 amino acids |

Database Links

| | |
|-------------------|-----------|
| Entrez Gene | 7014 |
| SwissProt ID | Q15554 |
| Protein Accession | NP_005643 |

Application



Western blot
5.0ug/ml
ELISA Titer: 1:62500
Positive Control: Transfected 293T

| | |
|-------------------|---|
| Application Notes | WB: 1:500~1:2000 Notes: Optimal dilutions/concentrations should be determined by the researcher. |
|-------------------|---|

Additional Information

| | |
|----------------------|---|
| Form | Liquid |
| Storage Instructions | Aliquot and store at -20°C. Avoid repeated freeze / thaw cycles |
| Storage Buffer | phosphate buffered saline , pH 7.4, 150mM NaCl, 0.02% sodium azide and 50% glycerol. |
| Note | The product is for research use only,not for use in diagnostic or therapeutic procedures. |

OmnimAbs.com

order@Omnimabs.com

506 N. GARFIELD AVE #210 ALHAMBRA, CA 91801

This product is for research use only and is not approved for use in humans or in clinical diagnosis. Primary Antibodies are guaranteed for 1 year from date of receipt

