



Catalog: OM105112

Scan to get more validated information



Rabbit anti-UTF1 polyclonal antibody - middle region

Catalog: OM105112

☐ 100ug

Product profile

Product name	Rabbit anti-UTF1 polyclonal antibody - middle region
Antibody Type	Primary Antibodies
Immunogen	The immunogen for anti-UTF1 antibody: synthetic peptide directed towards the middle region of human UTF1

Key Feature

Clonality	Polyclonal
Isotype	IgG
Host Species	Rabbit
Tested Applications	WB ,IHC
Species Reactivity	Bovine Guinea Pig Human Mouse Pig Rat
Concentration	1 mg/ml
Purification	Affinity purified

Target Information

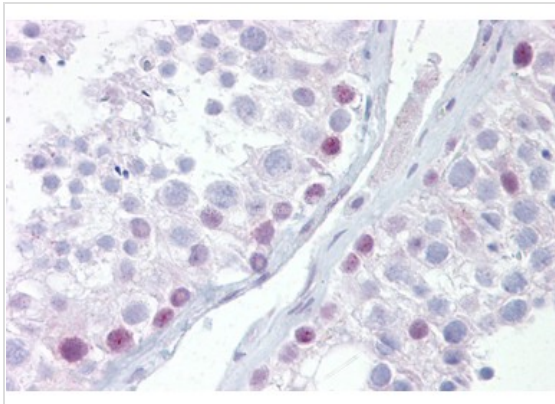
Gene Symbol	UTF1
Gene Synonyms	UTF1
Gene Full Name	Undifferentiated embryonic cell transcription factor 1
Gene Summary	UTF1 acts as a transcriptional coactivator of ATF2.
Molecular Weight(MW)	36kDa
Sequence	341 amino acids

Database Links

Entrez Gene	8433
-------------	------

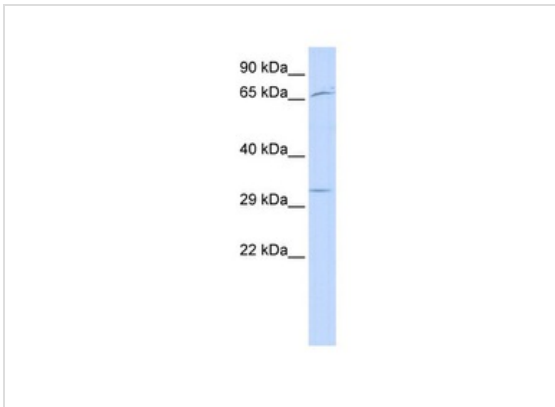
SwissProt ID	Q5T230
Protein Accession	NP_003568

Application



Application

Immunohistochemistry with Testis tissue at an antibody concentration of 5ug/ml using anti-UTF1 antibody ()



Application

WB Suggested Anti-UTF1 Antibody Titration: 0.2-1 ug/ml

ELISA Titer: 1:312500

Positive Control: Human Placenta

Application Notes

WB:1:500~1:2000

IHC:1:50~1:200

Notes:Optimal dilutions/concentrations should be determined by the researcher.

Additional Information

Form	Liquid
Storage Instructions	Aliquot and store at -20°C. Avoid repeated freeze / thaw cycles
Storage Buffer	phosphate buffered saline , pH 7.4, 150mM NaCl, 0.02% sodium azide and 50% glycerol.
Note	The product is for research use only,not for use in diagnostic or therapeutic procedures.

OmnimAbs.com

order@Omnimabs.com

506 N. GARFIELD AVE #210 ALHAMBRA, CA 91801

This product is for research use only and is not approved for use in humans or in clinical diagnosis. Primary Antibodies are guaranteed for 1 year from date of receipt

