



Catalog: OM105582

Scan to get more validated information



Rabbit anti-ZNF445 polyclonal antibody - middle region

Catalog: OM105582

☐ 100ug

Product profile

Product name	Rabbit anti-ZNF445 polyclonal antibody - middle region
Antibody Type	Primary Antibodies
Immunogen	The immunogen for anti-ZNF445 antibody: synthetic peptide directed towards the middle region of human ZNF445

Key Feature

Clonality	Polyclonal
Isotype	IgG
Host Species	Rabbit
Tested Applications	WB
Species Reactivity	Bovine Dog
Concentration	1 mg/ml
Purification	Affinity purified

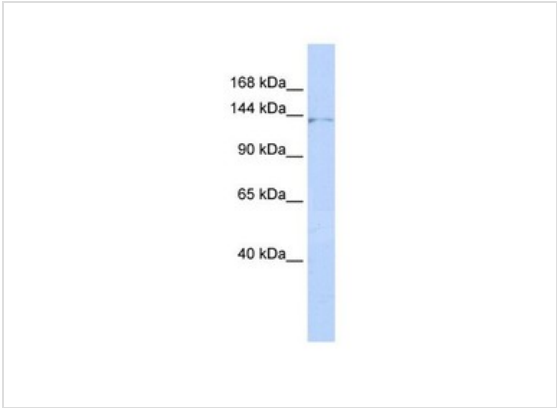
Target Information

Gene Symbol	ZNF445
Gene Synonyms	MGC126535; ZKSCAN15; ZNF168
Gene Full Name	Zinc finger protein 445
Gene Summary	ZNF445 belongs to the krueppel C2H2-type zinc-finger protein family. It contains 14 C2H2-type zinc fingers, 1 KRAB domain and 1 SCAN box domain. ZNF445 may be involved in transcriptional regulation.
Alternative Names	MGC126535, ZKSCAN15, ZNF168
Molecular Weight(MW)	119kDa
Sequence	1031 amino acids

Database Links

Entrez Gene	353274
SwissProt ID	P59923
Protein Accession	NP_852466

Application



Western blot
0.2-1 ug/ml
ELISA Titer: 1:62500
Positive Control: HepG2 cell lysate

Application Notes	WB:1:500~1:2000 Notes: Optimal dilutions/concentrations should be determined by the researcher.
-------------------	---

Additional Information

Form	Liquid
Storage Instructions	Aliquot and store at -20°C. Avoid repeated freeze / thaw cycles
Storage Buffer	phosphate buffered saline , pH 7.4, 150mM NaCl, 0.02% sodium azide and 50% glycerol.
Note	The product is for research use only,not for use in diagnostic or therapeutic procedures.

OmnimAbs.com

order@Omnimabs.com
506 N. GARFIELD AVE #210 ALHAMBRA, CA 91801
This product is for research use only and is not approved for use in humans or in clinical diagnosis. Primary Antibodies are guaranteed for 1 year from date of receipt

