



Catalog: OM105098

Scan to get more validated information



# Rabbit anti-ZNF496 polyclonal antibody - middle region

Catalog: OM105098

☐ 100ug

## Product profile

Product name	Rabbit anti-ZNF496 polyclonal antibody - middle region
Antibody Type	Primary Antibodies
Immunogen	The immunogen for anti-ZNF496 antibody: synthetic peptide directed towards the middle region of human ZNF496

## Key Feature

Clonality	Polyclonal
Isotype	IgG
Host Species	Rabbit
Tested Applications	WB
Species Reactivity	Bovine Dog Horse Pig Sheep
Concentration	1 mg/ml
Purification	Affinity purified

## Target Information

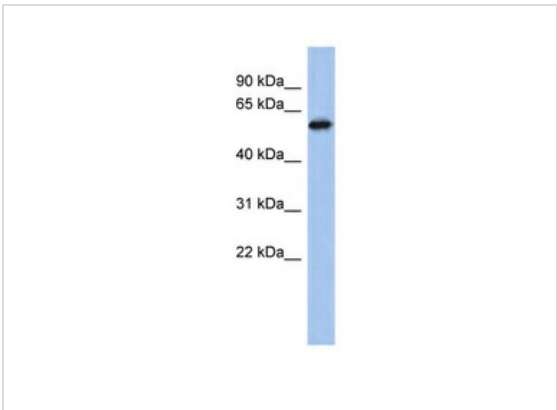
Gene Symbol	ZNF496
Gene Synonyms	ZNF496
Gene Full Name	Zinc finger protein 496
Gene Summary	ZNF496 contains a SCAN box, a KRAB-A domain, and four consensus C2H2-type zinc fingers preceded by a unique finger derivative, referred to herein as the C2HR motif. The C2HR motif functions to mediate protein-protein interaction with the cysteine-rich (C5HCH) domain of NSD1 in a Zn(II)-dependent fashion, and when tethered to RNA polymerase II promoters, represses transcription in an NSD1-dependent manner. ZNF496 contains a novel type of zinc finger motif that functions as a docking site for NSD1 and is more than just a degenerate evolutionary remnant of a C2H2 motif.
Alternative Names	MGC15548, NIZP1, ZKSCAN17, ZFP496

<b>Molecular Weight(MW)</b>	67kDa
<b>Sequence</b>	587 amino acids

### Database Links

<b>Entrez Gene</b>	84838
<b>SwissProt ID</b>	Q96IT1
<b>Protein Accession</b>	NP_116141

### Application



**Application**  
**WB Suggested Anti-ZNF496 Antibody Titration:** 0.2-1 ug/ml  
**ELISA Titer:** 1:12500  
**Positive Control:** PANC1 cell lysate

<b>Application Notes</b>	<b>WB:</b> 1:500~1:2000 <b>Notes:</b> Optimal dilutions/concentrations should be determined by the researcher.
--------------------------	---

### Additional Information

<b>Form</b>	Liquid
<b>Storage Instructions</b>	Aliquot and store at -20°C. Avoid repeated freeze / thaw cycles
<b>Storage Buffer</b>	phosphate buffered saline , pH 7.4, 150mM NaCl, 0.02% sodium azide and 50% glycerol.
<b>Note</b>	The product is for research use only,not for use in diagnostic or therapeutic procedures.

# OmnimAbs.com

order@Omnimabs.com  
 506 N. GARFIELD AVE #210 ALHAMBRA, CA 91801  
 This product is for research use only and is not approved for use in humans or in clinical diagnosis. Primary Antibodies are guaranteed for 1 year from date of receipt

