



**Catalog: OM127258**

Scan to get more validated information



# Rabbit anti-ZNF541 polyclonal antibody

Catalog: OM127258

☐ 100ug

## Product profile

Product name	Rabbit anti-ZNF541 polyclonal antibody
Antibody Type	Primary Antibodies
Immunogen	The antiserum was produced against synthesized peptide derived from human ZNF541.

## Key Feature

Clonality	Polyclonal
Host Species	Rabbit
Tested Applications	WB ,ELISA
Species Reactivity	Human
Concentration	1 mg/ml
Purification	Affinity purified

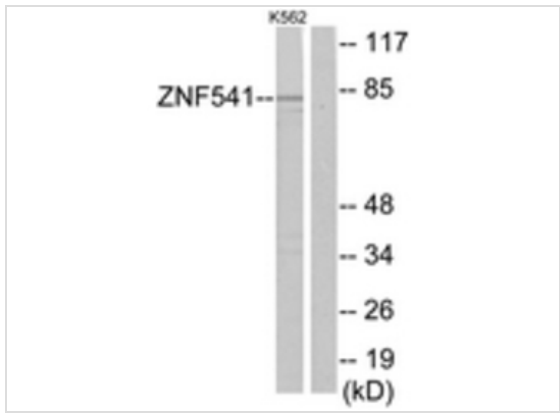
## Target Information

Gene Symbol	ZNF541
Gene Synonyms	Zinc finger protein 541

## Database Links

Entrez Gene	84215
Unigene	14161
SwissProt ID	Q9H0D2

## Application



**Western blot**

Western blot analysis of extracts from K562 cells, using ZNF541 Antibody. The lane on the right is treated with the synthesized peptide

**Application Notes**      **WB:**1:500~1:1000  
**ELISA:**1:20000

**Additional Information**

<b>Form</b>	Liquid
<b>Storage Instructions</b>	store at -20°C. Avoid repeated freeze / thaw cycles
<b>Storage Buffer</b>	Rabbit IgG in phosphate buffered saline (without Mg <sup>2+</sup> and Ca <sup>2+</sup> ), pH 7.4, 150mM NaCl, 0.02% sodium azide and 50% glycerol.
<b>Note</b>	The product is for research use only,not for use in diagnostic or therapeutic procedures.

OmnimAbs.com

order@Omnimabs.com  
506 N. GARFIELD AVE #210 ALHAMBRA, CA 91801  
This product is for research use only and is not approved for use in humans or in clinical diagnosis. Primary Antibodies are guaranteed for 1 year from date of receipt